

BASIC RULES FOR INSTALLING

FAS 04/006-5

AXIAL FANS

You will find in this document:

- Layout and assembly principles
- Motor connection diagrams
- Information on maintenance:
 - motors
 - transmission (if applicable)
 - lubrication

For further information, please contact our after-sales service.

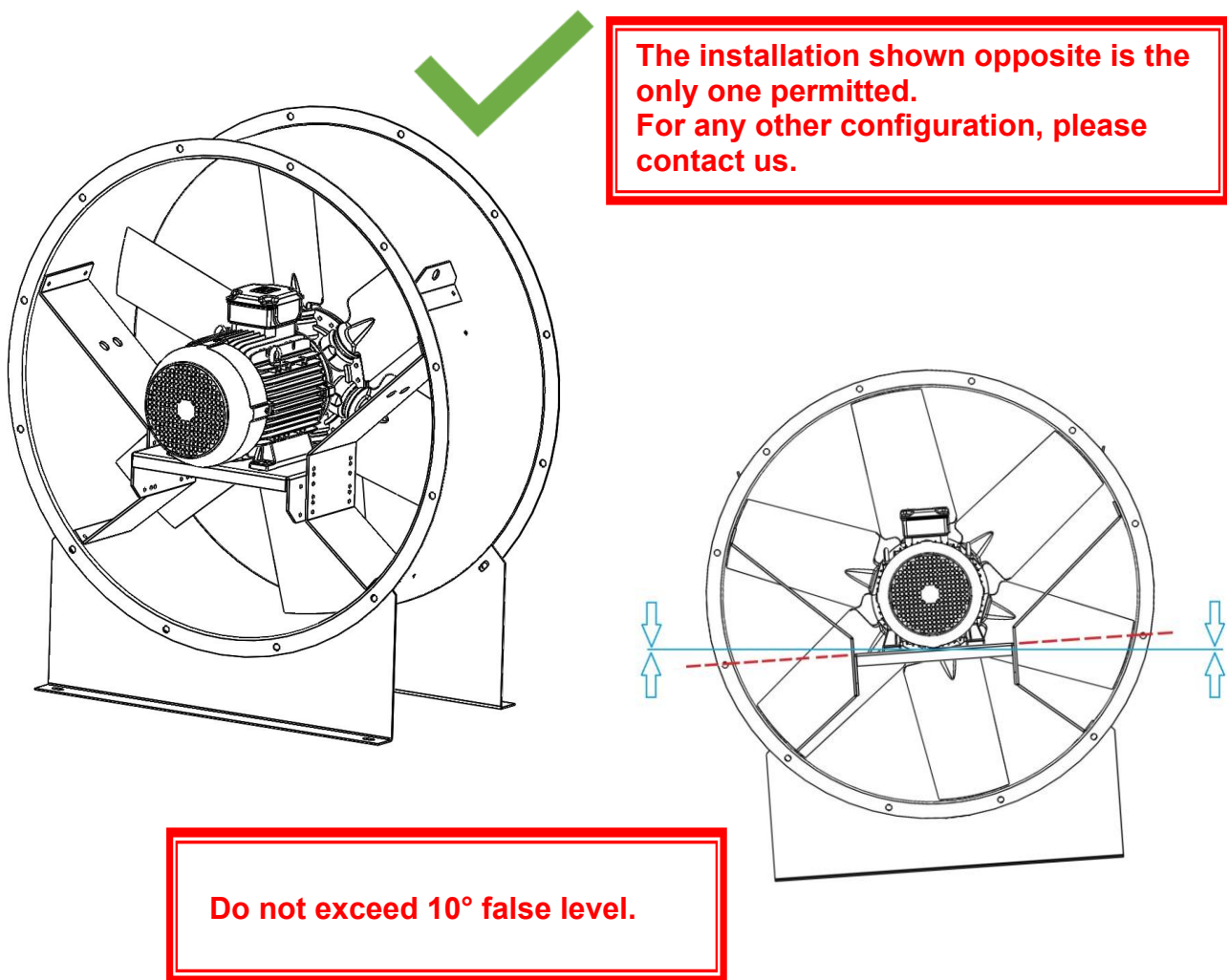
1. Location

Before proceeding with installation, it is important to check the direction of the fan's air flow on a label affixed to the fan wall, and position it in accordance with the intended direction of the pipes.

See more +

If the fan is to be installed high up and suspended from a ceiling or framework, the unit's feet has to rest on a structure attached to the ceiling or framework.

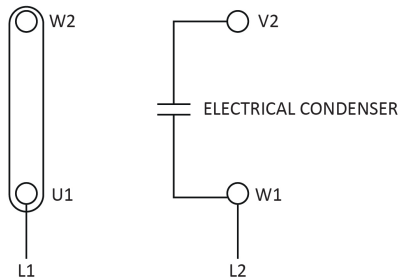
The fan feet must **NEVER** be fixed directly upside down to the ceiling or roof structure, as the weight of the motor will deform the case and damage the impeller, case and motor.



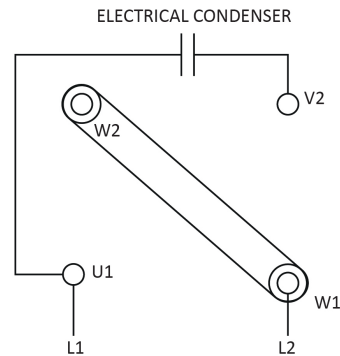
To avoid vibration, and hence mechanical noise, we recommend fitting anti-vibration pads under the unit's feet, and connecting it to the network via flexible sleeves upstream and downstream of the flow.

2. MOTOR CONNECTIONS

SINGLE-PHASE MOTOR 230V

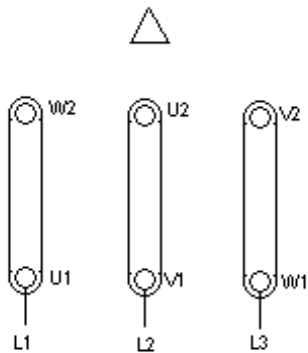


Clockwise rotation

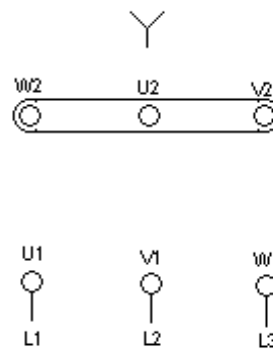


Anti clockwise rotation

ONE-SPEED THREE-PHASE MOTOR – 230/400V

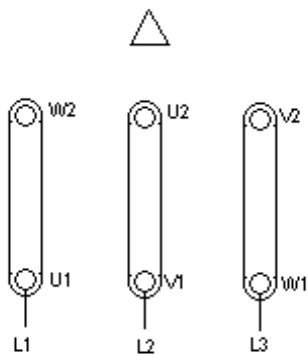


Voltage lower than 230V = Δ

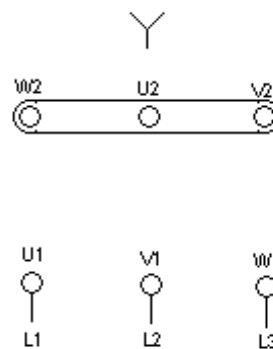


Voltage above 400V = Y

ONE-SPEED THREE-PHASE MOTOR – 400/690V

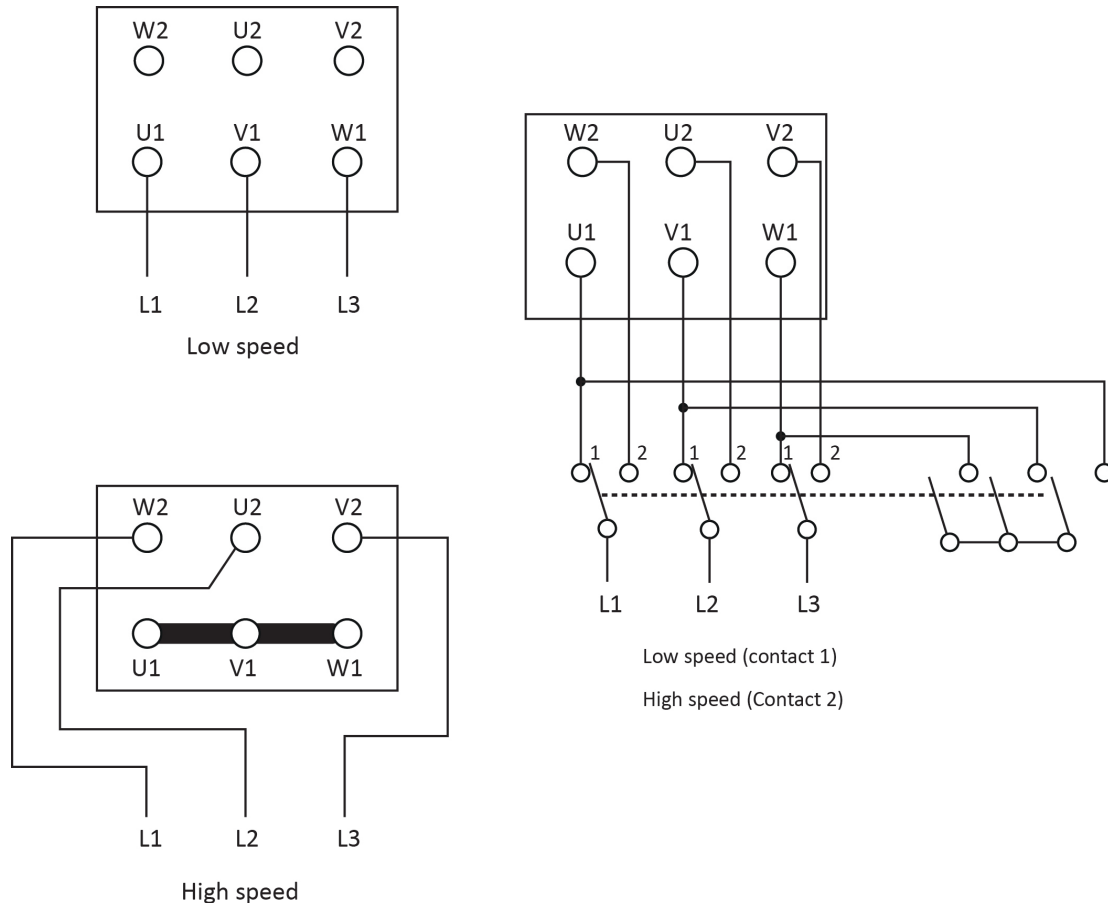


Voltage lower than 400V = Δ



Voltage above 690V = Y

TWO-SPEED THREE-PHASE MOTOR DAHLANDER



3. MAINTENANCE

BEFORE SERVICING, SWITCH OFF THE DEVICE

a) Motors

Motor bearings are generally greased for life and therefore require no special maintenance. If lubrication is required, please refer to the manufacturer's instructions. Except in special cases, it is the responsibility of the installer or integrator to open any drain holes.

b) Transmissions

In case of a drive unit, check that the pulleys are correctly aligned and that the belts are correctly tensioned, to ensure maximum longevity.

c) Lubrication

Transmission bearings are greased at the factory, but should be **monitored regularly**. They should be topped up **at least once a quarter**.

In the event of a **particular environment** (temperature or aggressiveness), they should be checked **monthly**.

4. STORAGE AND PROTECTION

Fans should be stored indoors, in their original packaging, away from dust, shocks and bad weather.

Similarly, it is preferable not to store them close to a source of vibration in order to preserve the integrity of the bearings.

If stored for longer than 3 months, turn the motor rotor a quarter turn every fortnight to avoid marking the bearings under the effect of the weight of the impeller.