

Compact design, easy to install.

Acoustic : Attenuation up to 20 dB in standard version



**USE**

Acoustic comfort.  
Reduces noise from the centrifugal fan.



**TECHNICAL DESCRIPTION**

- Z275 galvanized steel structure,
- Rockwool insulated panels 50 mm thick,
- Standard attenuation up to 20 dB,
- Air intake and discharge adapted most common industrial networks.



Available  
in 6 sizes

GENERAL VENTILATION

**Options**

- 304 L or 316 L passivated stainless steel
- Painted steel according to RAL to be defined
- ATEX application
- Rockwool thickness 100 mm for attenuations from 20 dB to 35 dB

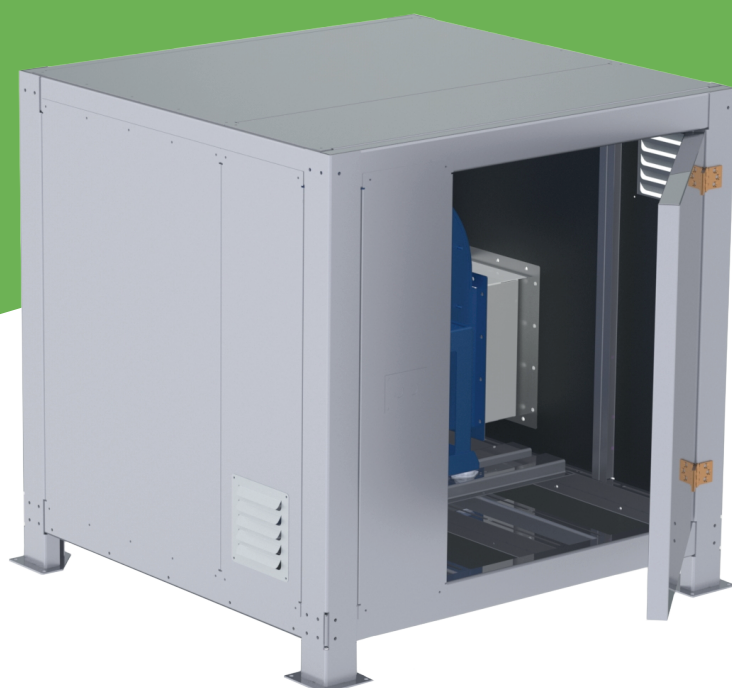
**C-BOX +**



Side access door for maintenance.

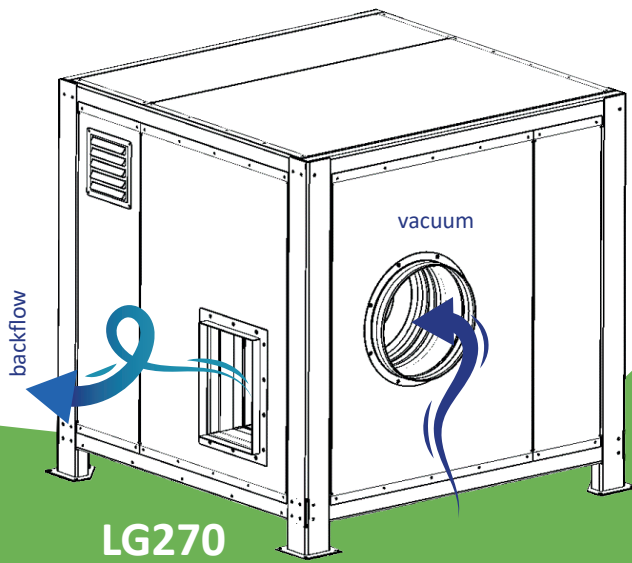


Easy electrical connection.

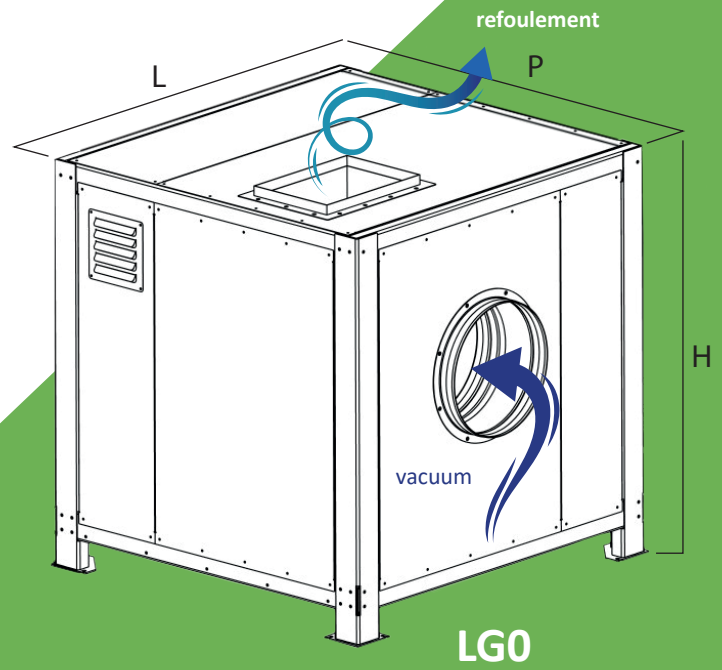




GENERAL VENTILATION



LG270



LG0

**C-BOX Flexibility on top**

Accessories

- Silencer (sound trap) backflow/vacuum
- Protective grille
- Rigid connection/flexible connection
- Conversion piece square/round
- Proximity switch

**C-BOX Range**

Centrifugal type RL, RM and CA  
in LG0 or LG270 configuration as standard.

	Ø FANS*		L	H	P
C-BOX 1	Ø 310	Ø 350	1200	1200	1100
C-BOX 2	Ø 400	Ø 450	1400	1400	1350
C-BOX 3	Ø 500	Ø 560	1700	1700	1600
C-BOX 4	Ø 630	Ø 710	1900	1900	1900
C-BOX 5	Ø 800	Ø 900	2300	2300	2250
C-BOX 6	Ø 1000		2500	2500	2350

\*For other models and configurations, please consult us.

