



**AREM**

*THE VENTILATION PERFORMANCE*

CATALOG

**AREM is one of the largest French manufacturers of fans known throughout Europe.**

**AREM is especially known for its experience in making axial fans. Belt-driven and direct-driven, with short or long casings, with or without venturi, they are all designed in accordance with the specifications for the numerous applications for which they are intended.**

**Centrifugal fans using forwards or backwards inclined blades have just joined this range, which is one of the most extensive on the market.**



STANDARDS - RULES  
CONVENTIONS



SMOKE  
EXTRACTION



GENERAL  
VENTILATION



EXPLOSIVE  
ATMOSPHERES



COOLING



DRYING



INDUSTRIAL  
VENTILATION



ANCILLARIES



SMOKE  
EXTRACTION



GENERAL  
VENTILATION



EXPLOSIVE  
ATMOSPHERES



COOLING



DRYING



INDUSTRIAL  
VENTILATION



Direct-driven...



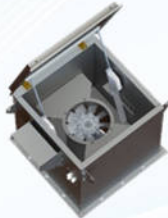
...Belt-driven

AXUS  
RANGE :

AX  
BX  
CX  
EX



Soundproof plenum box...

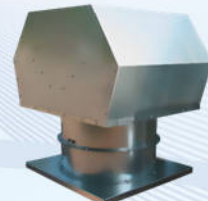


...With motorized opening

PAF  
HATCH



Roof fan - Horizontal discharge

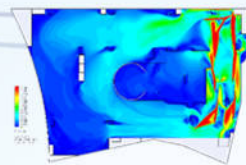


Roof fan -Vertical discharge

TH  
TV  
TD



Jet fan (Accelerator)



CFD Simulation

JFA  
CFD STUDY



Wall-mounted



... With ECM

DA  
DA ECM



Available on request

Available on request

Available on request



Axis with EC motors



...Specific with EC motors

AXUS EC  
RANGE :

AX  
BX  
CX  
EX





SMOKE  
EXTRACTION



GENERAL  
VENTILATION



EXPLOSIVE  
ATMOSPHERES



COOLING



DRYING



INDUSTRIAL  
VENTILATION



Direct-driven...



...Belt-driven

BACKWARD  
CURVED  
FAN :

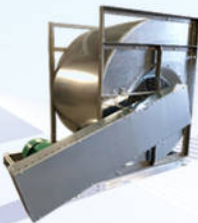
G Series  
R Series  
V Series  
Z Series  
VRD/VRDGT  
RL/RM EC



Available on request



Direct-driven...



...Belt-driven

FORWARD  
CURVED  
FAN :

C Series  
VAD  
TDA  
TMD



Available on request



Plenum box – backwards  
inclined blades

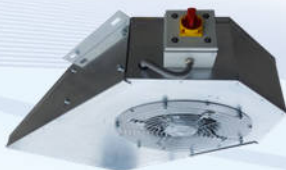


Plenum box – forwards  
inclined blades

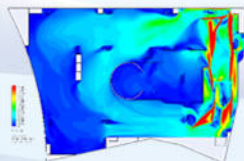
CELN  
CELN EC  
VGND  
VGNT



Available on request



Jet fan (Accelerator)



CFD Simulation

JFC  
CFD STUDY



Roof fan with horizontal  
discharge



Roof fan with vertical  
discharge

TCH  
TCV  
TCO  
TCVP



Plastic casing...



...Steel casing

SMALL  
DIAMETER :

CP  
CB



Available on request

# CONTENTS

STANDARDS – RULES – CONVENTIONS.....	9
AREM CONVENTIONS – AXIALS .....	10
AREM CONVENTIONS – CENTRIFUGALS.....	11
MATERIALS .....	13
MOTORS.....	14
ANCILLARIES .....	16
DIMENSIONS .....	17
PHYSICAL UNITS .....	18
STANDARDS.....	19
AREM STANDARD USES .....	21
ELEMENTARY FAN AIR PERFORMANCES LAWS.....	22
ELEMENTARY FAN NOISES LAWS .....	23
PRACTICAL TIPS .....	24
SMOKE EXTRACTION – AXIALS .....	26
AXUS RANGE – EN12101-3 CERTIFIED.....	27
AXUS PERFORMANCES: 4 Poles (1500 rpm).....	28
AXUS PERFORMANCES: 6 Poles (1000 rpm).....	29
AXUS PERFORMANCES: 2 Poles (3000 rpm).....	30
REVERSIBLE AXUS.....	33
CONTRA-ROTATING AXUS .....	34
AXUS BOLT-ON GUIDE VANE .....	35
PAF – SOUNDPROOFED PLENUM BOX.....	36
FRB – PLENUM BOX WITH MOTORIZED OPENING .....	37
TD / TV – ROOF FANS WITH H. / V. DISCHARGE.....	38
JFA – JETFAN.....	39
SMOKE EXTRACTION – CENTRIFUGALS.....	40
VAD – FORWARD CURVED BLADES.....	41
VRD / VRDGT – BACKWARD CURVED BLADES .....	46
CELN – IN LINE CENTRIFUGAL: AC / EC MOTORIZATION .....	52
JFC – JETFAN .....	54

GENERAL VENTILATION – AXIALS .....	55
AXUS PERFORMANCES: 4 Poles (1500 rpm).....	56
AXUS PERFORMANCES: 6 Poles (1000 rpm).....	57
AXUS PERFORMANCES: 2 Poles (3000 rpm).....	58
AXUS EC – ELECTRONICALLY COMMUTATED .....	61
DA – WALL MOUNTED.....	65
DA EC – ELECTRONICALLY COMMUTATED .....	66
EX – BELT DRIVE AXIAL .....	68
TH / TV – ROOF FANS WITH H. / V. DISCHARGE.....	69
GENERAL VENTILATION – CENTRIFUGALS .....	70
CA SERIE – FORWARD CURVED BLADES.....	71
RL SERIE – BACKWARD CURVED BLADES .....	73
RM SERIE – BACKWARD CURVED BLADES.....	75
RL / RM EC SERIE – ELECTRONICALLY COMMUTATED.....	77
RDH – BACKWARD CURVED BLADES: DOUBLE INLET .....	80
TDA – FORWARD CURVED BLADES: DOUBLE INLET .....	81
TMD – FORWARD CURVED BLADES: DOUBLE INLET .....	83
CP – BACKWARD CURVED BLADES.....	85
CB – FORWARD CURVED BLADES.....	89
VGND / VGNT – CENTRIFUGAL IN BOX: DOUBLE INLET.....	93
TCH / TCV – ROOF FANS WITH H. / V. DISCHARGE.....	94
TCO – ROOF FAN: HORIZONTAL DISCHARGE .....	96
TCVP – ROOF FAN: VERTICAL DISCHARGE.....	98
EXPLOSIVE ATMOSPHERES – AXIALS .....	100
AXUS RANGE – ATEX AXIAL FANS: GROUP II / ZONES 1&2 .....	101
AXUS PERFORMANCES: 4 Poles (1500 rpm).....	103
AXUS PERFORMANCES: 6 Poles (1000 rpm).....	104
AXUS PERFORMANCES: 2 Poles (3000 rpm).....	105
TH / TV – ROOF FAN WITH H. / V. DISCHARGE .....	108
EXPLOSIVE ATMOSPHERES – CENTRIFUGALS .....	109
R / G / V / Z SERIES – BACKWARD CURVED BLADES .....	110
CP – BACKWARD CURVED BLADES.....	111
TCO – ROOF FAN WITH HORIZONTAL DISCHARGE.....	115
TCVP – ROOF FAN WITH VERTICAL DISCHARGE.....	117
TDA – FORWARD CURVED BLADES: SELF-CERTIFICATION.....	119

COOLING – AXIALS.....	121
AXUS RANGE – OUR COOLING SOLUTIONS.....	122
AXUS PERFORMANCES: 4 poles (1500 rpm).....	123
AXUS PERFORMANCES: 6 poles (1000 rpm).....	124
AXUS PERFORMANCES: 2 poles (3000 rpm).....	125
AXUS EC – ELECTRONICALLY COMMUTATED .....	128
<b>DRYING – AXIALS.....</b>	<b>132</b>
<b>AXUS RANGE – OUR DRYING SOLUTIONS.....</b>	<b>133</b>
<b>AXUS PERFORMANCES: 4 Poles (1500 rpm).....</b>	<b>134</b>
<b>AXUS PERFORMANCES: 6 Poles (1000 rpm).....</b>	<b>135</b>
<b>AXUS PERFORMANCES: 2 Poles (3000 rpm).....</b>	<b>136</b>
<b>AXUS EC – ELECTRONICALLY COMMUTATED .....</b>	<b>139</b>
<b>EX – BELT DRIVE.....</b>	<b>143</b>
<b>DRYING – CENTRIFUGALS.....</b>	<b>144</b>
<b>RL / RM SERIE – BACKWARD CURVED BLADES .....</b>	<b>145</b>
<b>RL SERIE – BACKWARD CURVED BLADES .....</b>	<b>147</b>
<b>RM SERIE – BACKWARD CURVED BLADES.....</b>	<b>149</b>
<b>RL / RM EC SERIE – ELECTRONICALLY COMMUTATED.....</b>	<b>151</b>
INDUSTRIAL VENTILATION – AXIALS.....	154
AXUS PERFORMANCES: 4 Poles (1500 rpm).....	155
AXUS PERFORMANCES: 6 Poles (1000 rpm).....	156
AXUS PERFORMANCES: 2 Poles (3000 rpm).....	157
INDUSTRIAL VENTILATION – CENTRIFUGALS.....	160
GR SERIE – BACKWARD CURVED BLADES .....	161
RH SERIE – BACKWARD CURVED BLADES.....	163
RL SERIE – BACKWARD CURVED BLADES .....	165
RM SERIE – BACKWARD CURVED BLADES.....	167
VA SERIE – BACKWARD CURVED BLADES .....	169
VC SERIE – BACKWARD CURVED BLADES.....	171
VG SERIE – BACKWARD CURVED BLADES .....	173
VI SERIE – BACKWARD CURVED BLADES.....	175
VM SERIE – BACKWARD CURVED BLADES .....	177
VP SERIE – BACKWARD CURVED BLADES.....	179
ZA SERIE – CURVED RADIAL BLADES .....	181
ZB SERIE – CURVED RADIAL BLADES .....	183
ZC SERIE – STRAIGHT RADIAL BLADES.....	185
ZM SERIE – STRAIGHT RADIAL BLADES .....	187

ANCILLARIES.....	189
CONNECTION – AXIALS.....	190
CONNECTION – CENTRIFUGALS.....	191
FASTENING – SUPPORTS AND INSTALLATION KITS.....	192
SWITCH AND JUNCTION BOX.....	193
CABLE SECTION AND TYPE.....	194
SUPPORT FEET / BACKDRAUGHT DAMPERS.....	195
LOUVRE SHUTTERS.....	196
GUSSETS: VERTICAL MOUNTING.....	197
ANTI-VIBRATION MOUNTS.....	198
BASE PLATE.....	199
BEND MATCHING FLANGE.....	200
FLAT MATCHING FLANGE.....	201

*Any errors or omissions that may have found their way into this catalog, despite the care taken in producing it, do not engage the liability of AREM.*

*We reserve the right to make modifications resulting from technical, mechanical, electrical or other types of changes.*

*The illustrations are non-binding.*





## DRYING – AXIALS



### DESCRIPTION

We have a range from diameter 400mm to 1800mm, from a few hundred m<sup>3</sup>/h to 240,000m<sup>3</sup>/h, with motors with 2, 4 and 6 poles, 1 or 2 speeds. Our fans might also be suitable for use in geographic areas with specific electricity networks, i.e. 60 Hz.

Other motor speeds are available on request.



### APPLICATION

Clean air or slightly dusty air extraction:

- Grain drying
- Wood drying
- Potato drying



### FLUID TEMPERATURE

The standard operating temperatures are from -20°C to +40°C with a class F motor.

On request, fans fitted with a class H motor can operate in environments up to +130°C.



### CONSTRUCTION

Our fans are made in our factory, with pre-galvanized steel as standard. At your request, to meet your specifications and constraints, we can supply:

- 304L or 316L stainless steel, with or without passivation
- Hot-dip galvanization
- Aluminium
- Surface treatment with epoxy paint

Solutions with EC motors are available in direct-drive or belt-drive. Please ask us.



- ✓ **AXUS range: AX - BX - CX**
- ✓ **Belt-drive: EX**



### ANCILLARIES

In line with your requirements, we have safety guards, support feet, rigid coupling flanges, outlet backdraught dampers, on-off switch connectors, etc. to simplify your installation. See **ANCILLARIES tab** for more information.



### OPTION

We can wire motors, switch connectors, make special productions, etc. and study your requirements to meet your specifications and constraints.

**Reminder:** All conventional and normative elements are presented in the **STANDARDS-RULES-CONVENTIONS** tab. All ancillaries are presented in the **ANCILLARIES** tab at the end of the catalog. Please contact the sales team for your specific requirements.



## AXUS RANGE – OUR DRYING SOLUTIONS

### *Standard range*

Our fans are made in France at our factory in Saint-Brisson sur Loire and are designed for drying or to operate at high temperatures up to +130°C.

The use of specific motors (class H or non-classified motors) designed for particular atmospheres, including continually high temperatures, allows our range of axial fans to meet high flow rate requirements with variable air speeds and suitable for different products: wood, fruits and vegetables, cereals, bricks and terracotta tiles, etc.

Our impellers are defined and made to order. Optimizing the blades' angle and quantity provides the best energy efficiency and the most suitable power for your need. The glass reinforced polyamide impellers provide a solution that combines efficiency, robustness and lightness, including for temperatures up to 120°C, and our aluminium solutions will meet your requirements for more extreme temperatures.

Using mainly foot-mounted motors (B3) facilitates use in many configurations and makes any modification or maintenance requirements easy to satisfy.

Depending on the products to treat, you can opt for our casings and other metal parts for an aluminium, combined aluminium-stainless steel, 304L or 316L stainless steel, or hot-dip galvanized steel construction. A paint coating with particular specifications (thickness, weather class, etc.) can be made upon request.

Thanks to our ranges of reversible impellers, we can cover the requirements for flow reversal integrated into your processes (closed loop treatments or switching from an extraction mode to an air supply mode).

Our range of long or short casings, with or without inlet bellmouth, enables us to provide different mounting configurations and different flow types (vertical, horizontal) with the addition of relevant ancillaries.

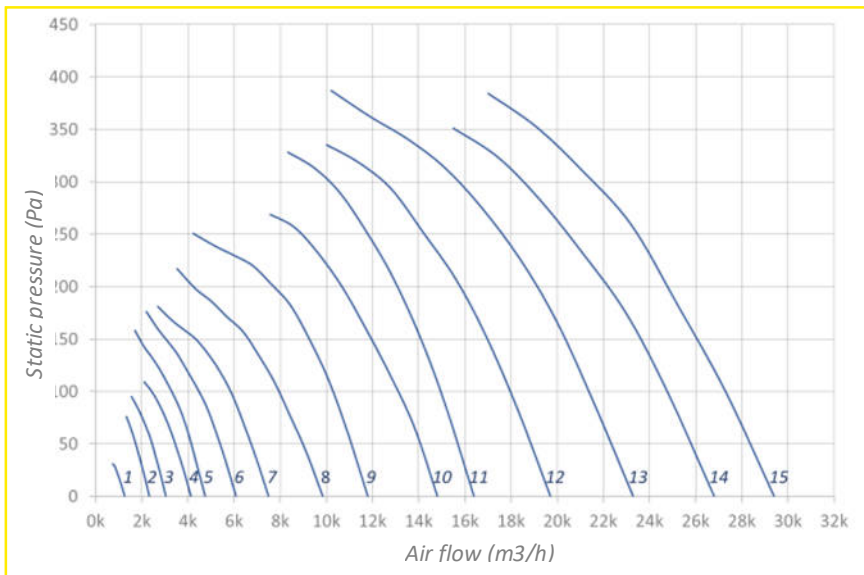
To achieve the most competitive lead time for our customers, we keep the largest possible range of motor power in stock and have access to multiple supply sources.



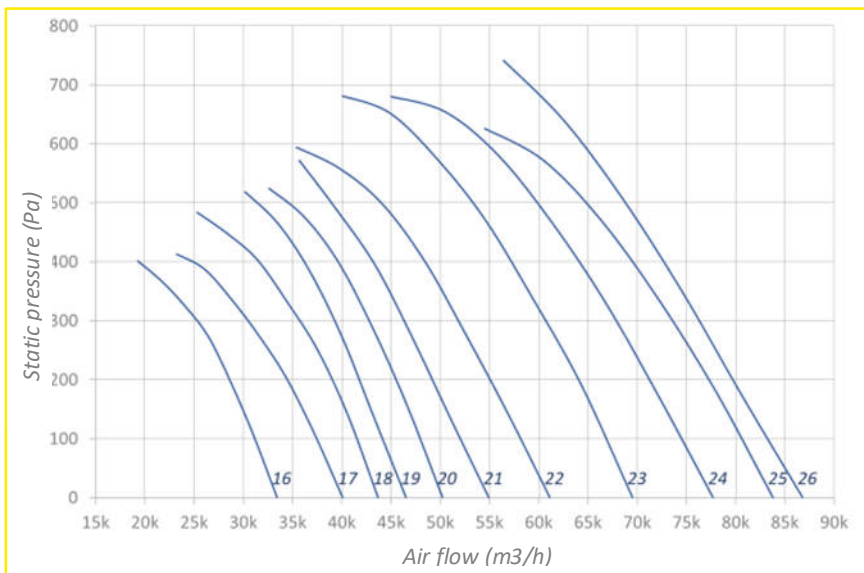


# AXUS PERFORMANCES: 4 Poles (1500 rpm)

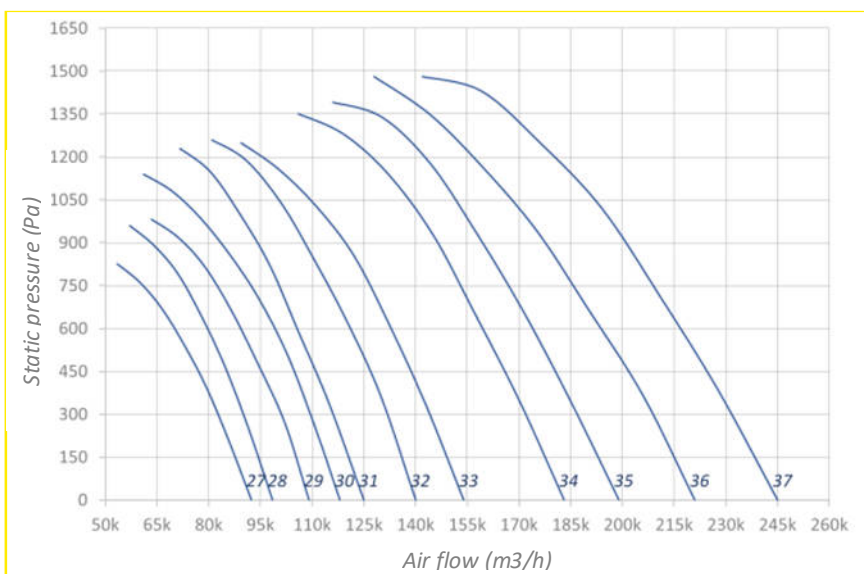
Common operating range



Curve No.	Ø mm	Power kW	Current A
1	250	0.09	0.3
2	315	0.09	0.3
3	350	0.09	0.3
4	400	0.12	0.4
5	450	0.18	0.5
6	500	0.25	0.7
7	500	0.37	1.1
8	560	0.55	1.5
9	560	0.75	1.9
10	630	1.10	2.6
11	630	1.50	3.4
12	630	2.20	4.6
13	700	2.20	4.6
14	700	3.00	6.3
15	800	3.00	6.3



Curve No.	Ø mm	Power kW	Current A
16	800	4.00	7.9
17	800	5.50	11.1
18	800	7.50	14.3
19	900	7.50	14.3
20	900	9.50	17.8
21	900	11.00	20.7
22	900	15.00	27.7
23	1000	15.00	27.7
24	1000	18.50	35.4
25	1000	22.00	42.2
26	1000	30.00	53.8



Curve No.	Ø mm	Power kW	Current A
27	1120	22.00	42.2
28	1120	30.00	53.8
29	1120	37.00	66.4
30	1250	30.00	53.8
31	1250	45.00	81.3
32	1250	55.00	97.6
33	1400	55.00	97.6
34	1400	75.00	131.2
35	1400	90.00	160.5
36	1600	90.00	160.5
37	1600	110.00	189.3

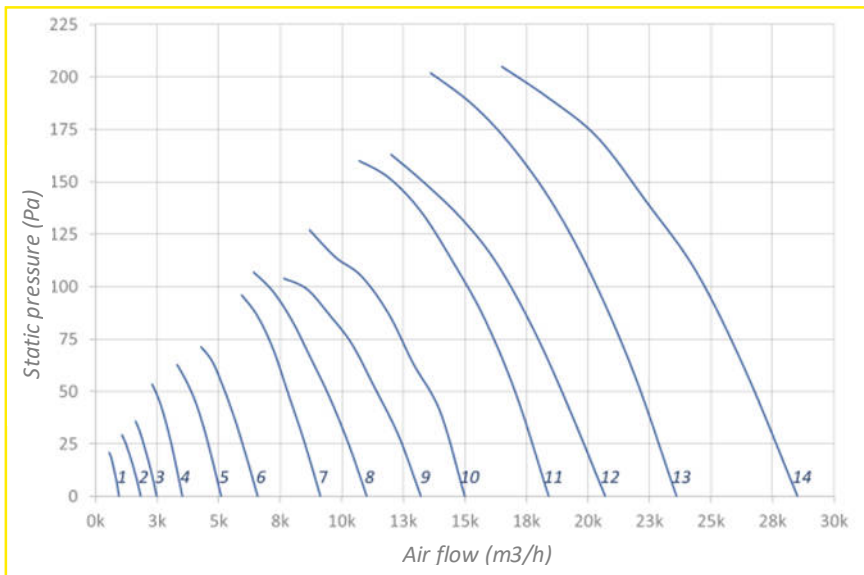
**Notes:**

The current is indicated for a 400V/50Hz electricity network, variable depending on the motorization. The curves represent just a very small part of air flow possibilities.

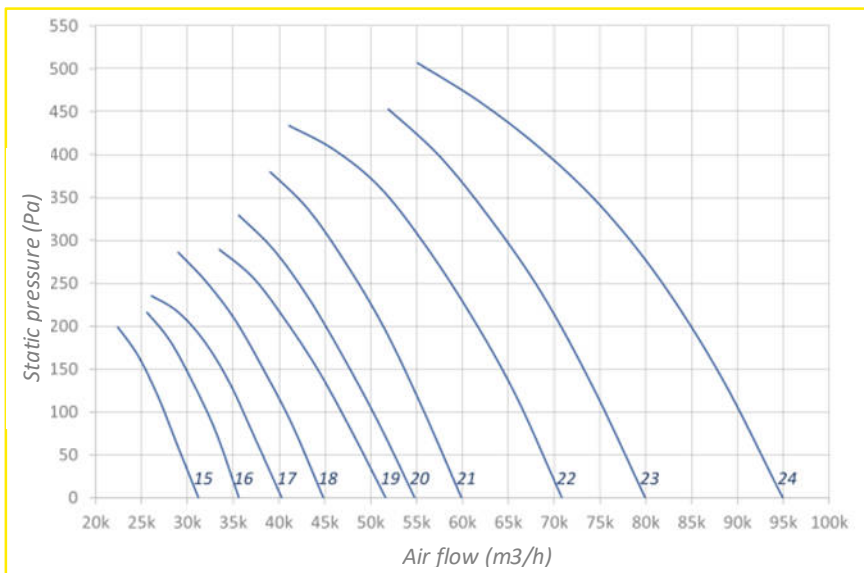


# AXUS PERFORMANCES: 6 Poles (1000 rpm)

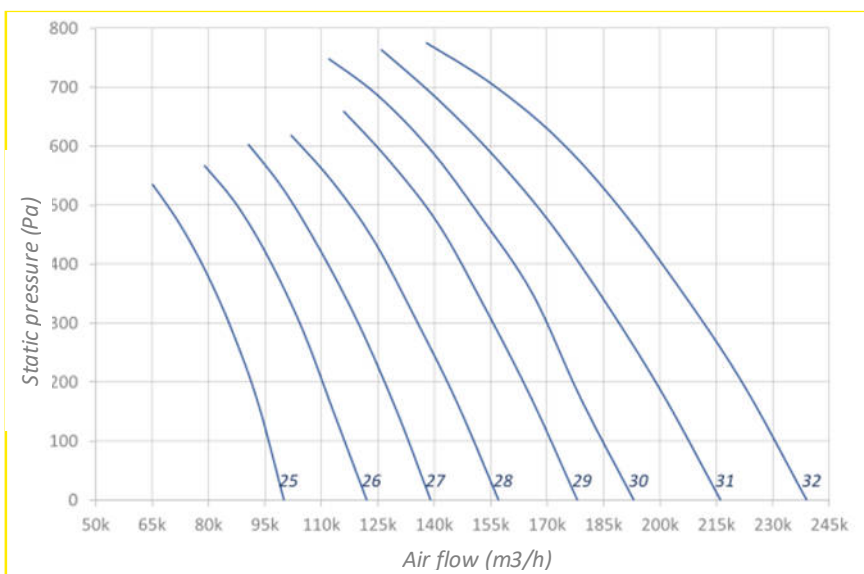
Common operating range



Curve No.	Ø mm	Power kW	Current A
1	250	0.09	0.5
2	315	0.09	0.5
3	350	0.09	0.5
4	400	0.12	0.6
5	450	0.18	0.7
6	500	0.25	0.8
7	560	0.37	1.1
8	630	0.37	1.1
9	630	0.55	1.5
10	630	0.75	2.1
11	710	1.10	2.6
12	800	1.10	2.6
13	800	1.50	3.9
14	800	2.20	5.2



Curve No.	Ø mm	Power kW	Current A
15	900	2.20	5.2
16	900	3.00	7.3
17	900	4.00	9.1
18	1000	4.00	9.1
19	1000	5.50	12.7
20	1000	7.50	16.9
21	1120	9.20	19.1
22	1120	11.00	22.5
23	1120	15.00	28.6
24	1250	18.50	36.4



Curve No.	Ø mm	Power kW	Current A
25	1250	22.00	43.1
26	1400	22.00	43.1
27	1400	30.00	55.4
28	1600	30.00	55.4
29	1600	37.00	67.3
30	1600	45.00	83.5
31	1800	45.00	83.5
32	1800	55.00	99.3

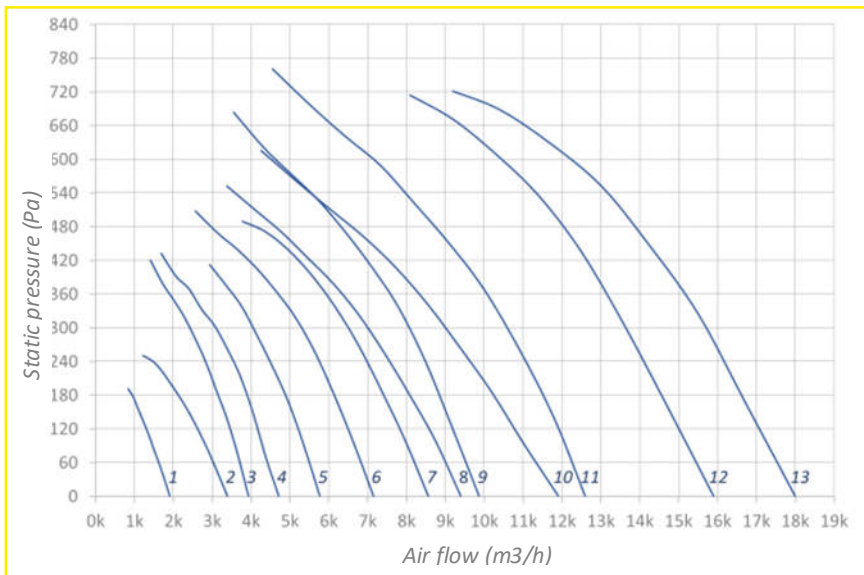
**Notes:**

The current is indicated for a 400V/50Hz electricity network, variable depending on the motorization. The curves represent just a very small part of air flow possibilities.

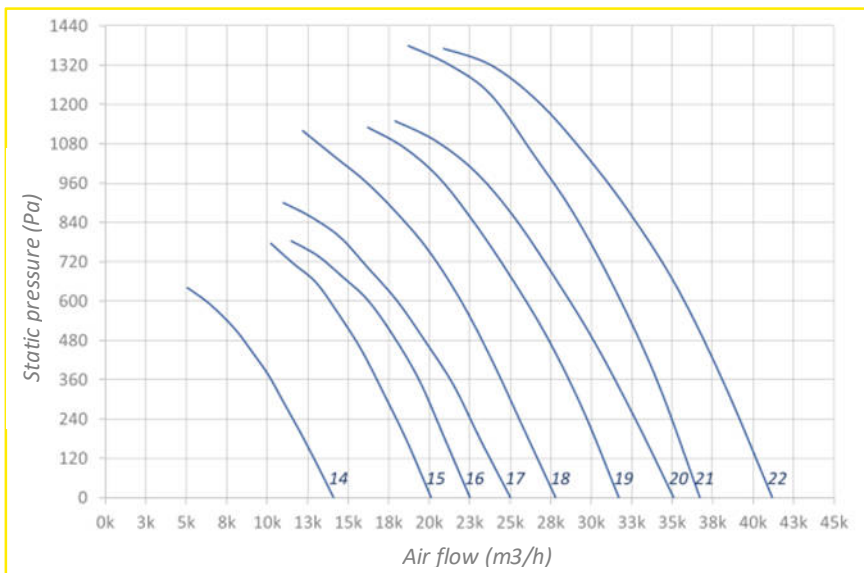


# AXUS PERFORMANCES: 2 Poles (3000 rpm)

Common operating range



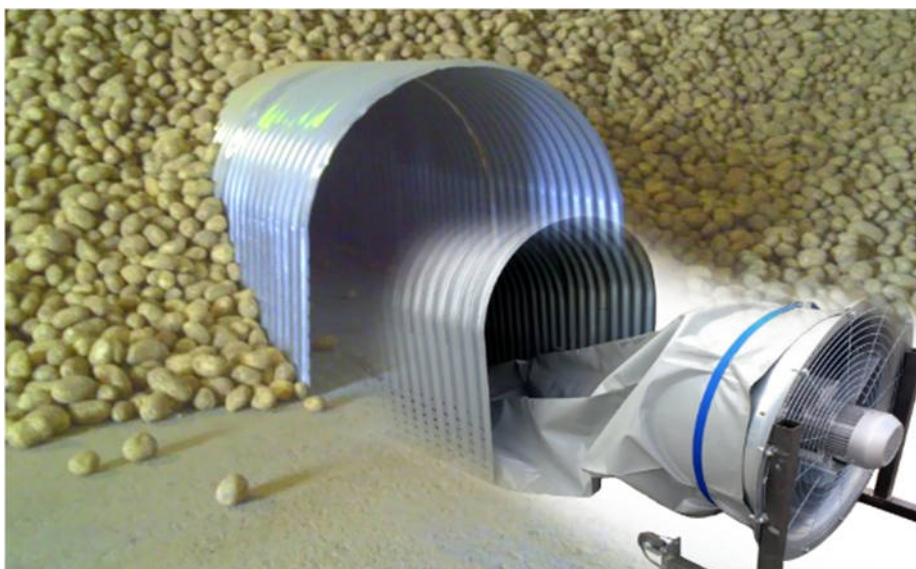
Curve No.	Ø mm	Power kW	Current A
1	250	0.12	0.4
2	315	0.18	0.5
3	350	0.37	0.9
4	350	0.55	1.3
5	350	0.75	1.6
6	400	0.75	1.6
7	400	1.10	2.3
8	450	1.10	2.3
9	450	1.50	3.2
10	500	1.50	3.2
11	500	2.20	4.5
12	500	3.00	6.2
13	500	4.00	8.3



Curve No.	Ø mm	Power kW	Current A
14	560	2.20	4.5
15	560	4.00	8.3
16	560	5.50	10.6
17	630	5.50	10.6
18	630	7.50	13.4
19	630	9.20	16.1
20	630	11.00	18.9
21	630	15.00	26.2
22	630	18.50	31.8

**Notes:**

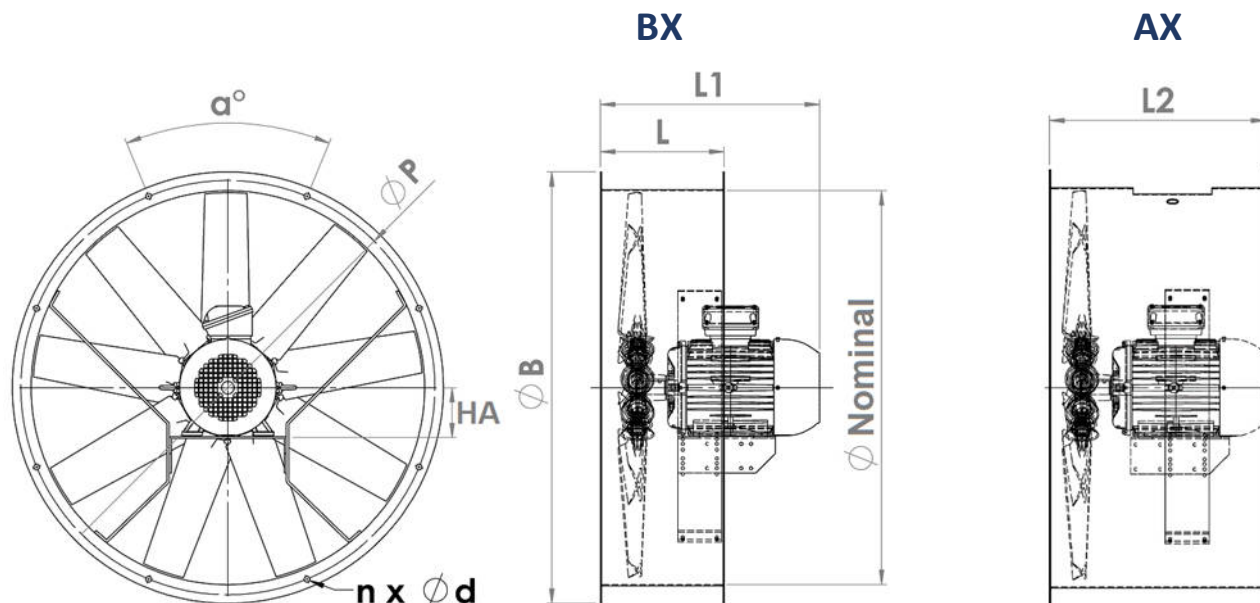
The current is indicated for a 400V/50Hz electricity network, variable depending on the motorization.  
The curves represent just a very small part of air flow possibilities.





# AX / BX DIMENSIONS

AX (long casing) - BX (short casing)



Nominal $\varnothing$ mm	HA mm	L mm	L2 mm	B mm	n -	$\alpha$ °	d mm	P mm	AX weight* kg	BX weight* kg
250	56-71	235	350	330	6	60	9	300	13	11
315	56-80	254	350	385	6	60	12	351	24	22
350	63-90	254	350	425	6	60	12	390	29	27
400	63-100	254	440	470	6	60	12	440	41	37
450	63-112	254	440	520	6	60	12	490	58	54
500	63-112	254	440	572	6	60	12	540	59	55
	132	425	600						98	92
560	71-112	254	440	626	6	60	12	594	62	57
	132	425	600						101	95
630	63-112	254	440	704	6	60	12	670	65	59
	132	425	600						105	99
	160	425	675						139	133
710	80-112	254	440	780	6	60	12	744	69	62
	132-160	425	675						142	135
800	80-112	254	440	885	8	45	12	850	72	65
	132-160	425	675						177	163
	180	425	800						184	170
900	90-160	425	675	990	12	30	15	954	188	171
	180	425	800						231	205
1000	90-160	425	675	1090	12	30	15	1056	206	187
	180	425	800						250	222
	200	600	865						320	294
1120	100-180	465	800	1230	12	30	15	1190	266	237
	200-225	665	1010						524	485
	250-280	800	1010						689	639
1250	100-180	465	800	1375	12	30	15	1320	308	265
	200-225	665	1010						549	506
	250-280	800	1010						950	917
1400	132-180	650	900	1530	12	30	15	1480	348	326
	200-225	650	1010						586	535
	250-280	800	1010						994	957
1600	132-180	650	900	1730	16	22.5	15	1660	398	350
	200-225	650	1010						616	559
	250-280	650	1010						1035	993
1800	160-225	685	1010	1930	24	15	15	1880	560	607
	250-280	800	1010						1089	1042

**Notes:**

L1 is variable depending on the motorization.

The flange drill holes are AREM type by default. Specify when ordering if your requirement is for the Eurovent standard.

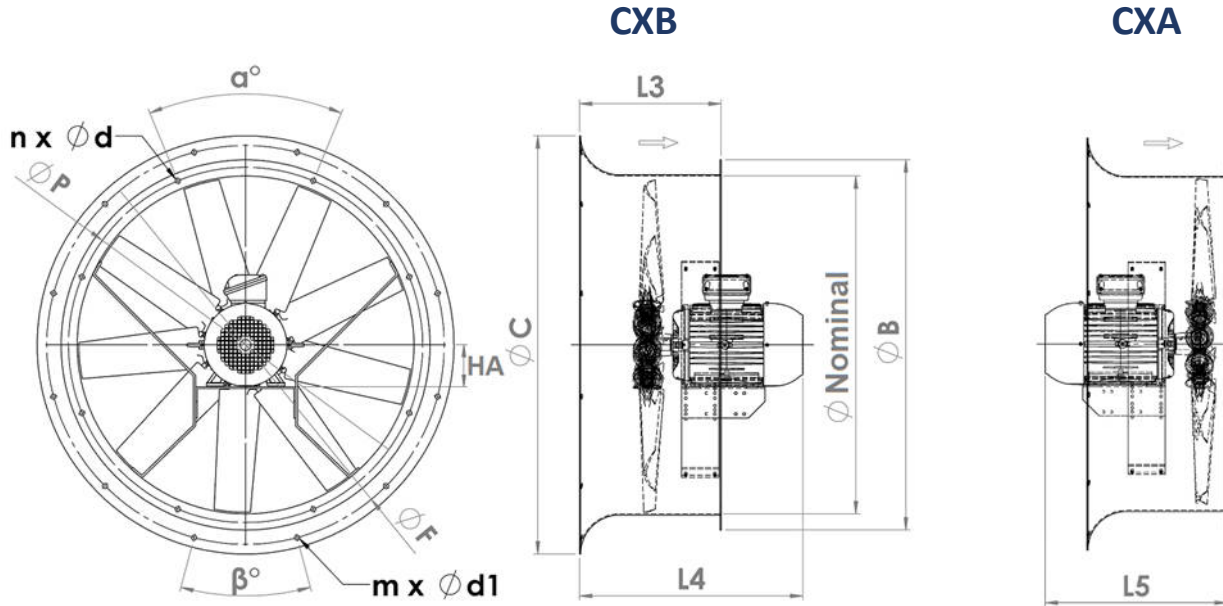
\*Weights are provided for information only and include the motor weights of the maximum power (without ancillaries).

For diameters greater than 1800mm, contact us.



# CX DIMENSIONS

CX (short casing with inlet bellmouth)



Nominal Ø mm	HA mm	L3 mm	B mm	n -	α °	d mm	P mm	C mm	m -	β °	d1 mm	F mm	CX weight* kg
250	56-71	-	330	6	60	9	300	-	-	-	-	-	-
315	56-80	-	385	6	60	12	351	-	-	-	-	-	-
350	63-90	-	425	6	60	12	390	-	-	-	-	-	-
400	63-100	330	470	6	60	12	440	530	6	60	12	490	47
450	63-112	330	520	6	60	12	490	580	6	60	12	540	60
500	63-112 132	330 425	572	6	60	12	540	685	6	60	12	642	61 101
560	71-112 132	330 425	626	6	60	12	594	715	6	60	12	670	65 105
630	63-112 132 160	330 500 500	704	6	60	12	670	790	6	60	12	744	71 113 147
710	80-112 132-160	330 500	780	6	60	12	744	900	8	45	12	850	77 150
800	80-112 132-160 180	340 565 565	885	8	45	12	850	1000	12	30	12	954	80 185 195
900	90-160 180	565 565	990	12	30	15	954	1100	12	30	15	1056	198 241
1000	90-160 180 200	565 565 675	1090	12	30	15	1056	1230	12	30	15	1190	216 255 340
1120	100-180 200-225 250-280	565 750 1110	1230	12	30	15	1190	1360	12	30	15	1320	286 554 719
1250	100-180 200-225 250-280	565 750 1110	1375	12	30	15	1320	1520	12	30	15	1480	338 579 980
1400	132-180 200-225 250-280	750 750 1110	1530	12	30	15	1480	1600	16	22.5	15	1560	388 626 1034
1600	132-180 200-225 250-280	750 750 1110	1730	16	22.5	15	1660	1810	16	22.5	15	1756	438 656 1075
1800	160-225 250-280	750 1110	1930	24	15	15	1880	2030	24	15	18	1980	605 1139

**Notes:**

L4 and L5 are variable depending on the motorization.

The flange drill holes are AREM type by default. Specify when ordering if your requirement is for the Eurovent standard.

\*Weights are provided for information only and include the motor weights of the maximum power (without ancillaries).

For diameters greater than 1800mm, contact us.



## AXUS EC – ELECTRONICALLY COMMUTATED

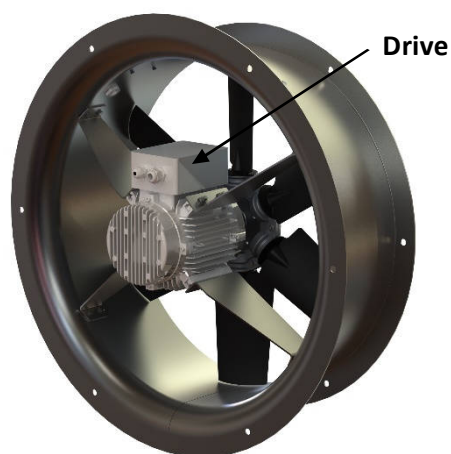
*Integrated and External Solutions*

If the fans are used daily for many hours at a time or require variability in their use, we have a range of axial fans fitted with electronically commutated motors. By means of different control modes, from potentiometer to Modbus, it is possible to adjust speeds, from the simplest to the most complicated and thus reduce the energy consumption of your installations. These fans are fitted with high-efficiency motors (from IE4 to IE5) and retain very high-performance levels over their entire operating range.

### Characteristics:

- Diameter from 400 to 1250mm
- EC solutions with integrated or external drive
- Electronic management and communication via ModBus RS485
- Motor speed variation with 0-10V input signal
- Fast connection terminal blocks

### Integrated EC



- ✓ Drive integrated in the motor
- ✓ Off / On: contact 1 or 0
- ✓ Speed feedback signal: 3 pulses/rev
- ✓ Motor fault code via Modbus
- ✓ Modbus connection: terminal blocks
- ✓ Temperature: from -20 to 45°C

### External EC



- ✓ Drive attached to the casing
- ✓ On/Off: detection 1 Volt
- ✓ Speed feedback signal: 1 pulse/rev
- ✓ Motor fault code via Modbus
- ✓ Modbus connection: terminal blocks or RJ12 plug
- ✓ Temperature: from -40 to 45°C
- ✓ 2x digital inputs: terminal blocks
  - On / Off
  - Default reset
  - Direction of rotation if use of reversible impeller
  - Booster mode (full motor speed)
- ✓ 1x digital output: terminal blocks
  - Tachymeter
  - In operation LED indicator
  - Fault LED indicator

### Factory settings:

- Motor with maximum speed 1500 rpm; we limit the minimum speed to 500 rpm.
- Motor with maximum speed 3000 rpm; we limit the minimum speed to 1000 rpm.
- In the external EC version, the inputs and outputs are not configured by default.



# AXUS EC RANGE

Standard range

DRYING



Our AXUS EC range is made in pre-galvanized steel as standard. Options in 304L or 316L stainless steel, hot-dip galvanized steel and paint coating are available on request. The range is available for single-phase and triple-phase networks for the 50/60Hz frequencies in accordance with the table below:

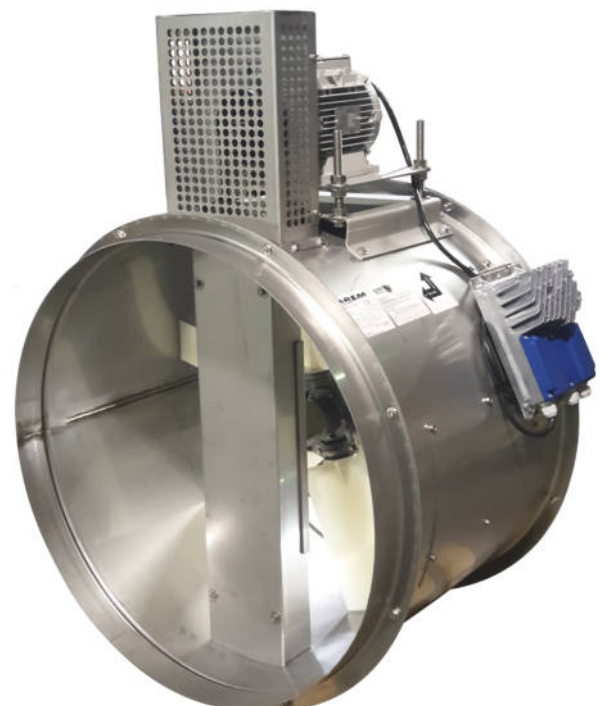
Diameter mm	Integrated EC Volt. 50/60Hz	External EC Volt. 50/60Hz
400	✓ (1x 230/280V)	✗
450	✓ (1x 230/280V)	✗
500	✓ (1x 230/280V)	✗
560	✓ (1x 230/280V)	✓ (1x 230/280V)
630	✓ (1x 230/280V)	✓ (3x 400/440V)
710	✓ (1x 230/280V)	✓ (3x 400/440V)
800	✓ (1x 230/280V)	✓ (3x 400/440V)
900	✗	✓ (3x 400/440V)
1000	✗	✓ (3x 400/440V)
1120	✗	✓ (3x 400/440V)
1250	✗	✓ (3x 400/440V)

Different solutions are proposed to meet specific requests. Based on the standard range, we can build tailor-made products to satisfy your specific applications:

- Solution with reversible impeller, in insulated plenum box, etc.
- 480V/60Hz network, corrosive environment, etc.
- Operation at particular speeds, configuration of inputs and outputs according to demand, etc.
- Specific mounting, external drive in a technical room, etc.
- Operation at temperatures from +50°C to 130°C

Example of specific mounting: Belt-driven axial fan

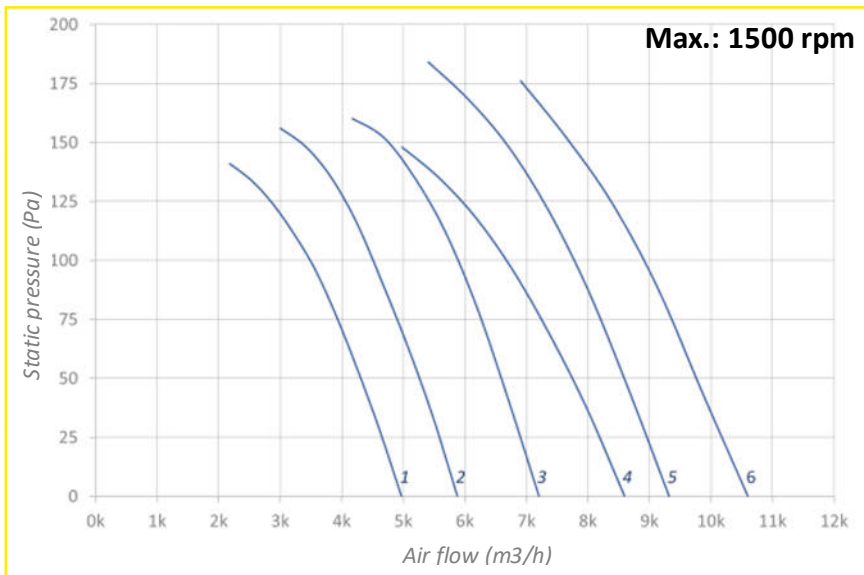
- ✓ EC motor with external drive
- ✓ Motor offset outside the air flow
- ✓ 316L finish
- ✓ Control in a technical room





# AXUS EC INTEGRATED: Max. speed 1500 and 3000 rpm

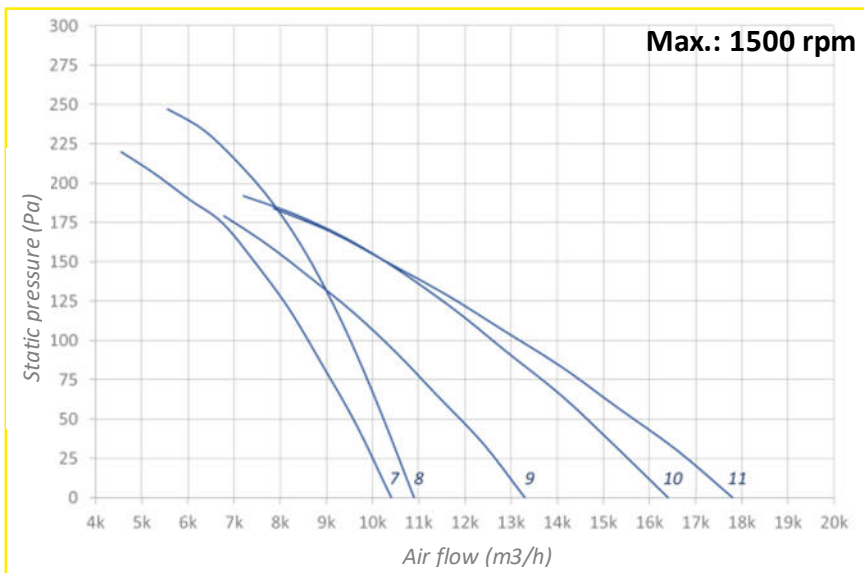
Common operating range



Curve No.	Ø mm	Power kW	Current A
1	400	0.20	1.6
2	400	0.40	2.8
3	450	0.40	2.8
4	500	0.40	2.8
5	500	0.55	3.6
6	500	0.80	4.8

**Notes:**

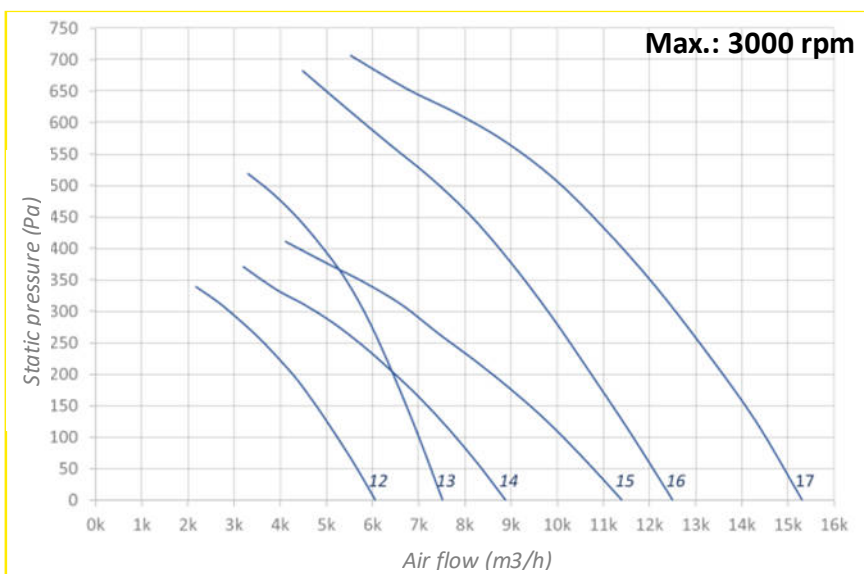
Frequency: 50Hz - 60Hz  
 Voltage: 230V - 280V  
 Minimum speed: 500 rpm  
 Maximum speed: 1500 rpm  
 Representation with maximum speed



Curve No.	Ø mm	Power kW	Current A
7	560	0.80	4.8
8	560	1.10	7.0
9	630	0.80	4.8
10	710	1.10	7.0
11	800	1.10	7.0

**Notes:**

Frequency: 50Hz - 60Hz  
 Voltage: 230V - 280V  
 Minimum speed: 500 rpm  
 Maximum speed: 1500 rpm  
 Representation with maximum speed



Curve No.	Ø mm	Power kW	Current A
12	400	0.40	2.8
13	400	0.80	4.8
14	450	0.80	4.8
15	500	1.10	7.0
16	500	1.50	9.6
17	500	2.20	14.0

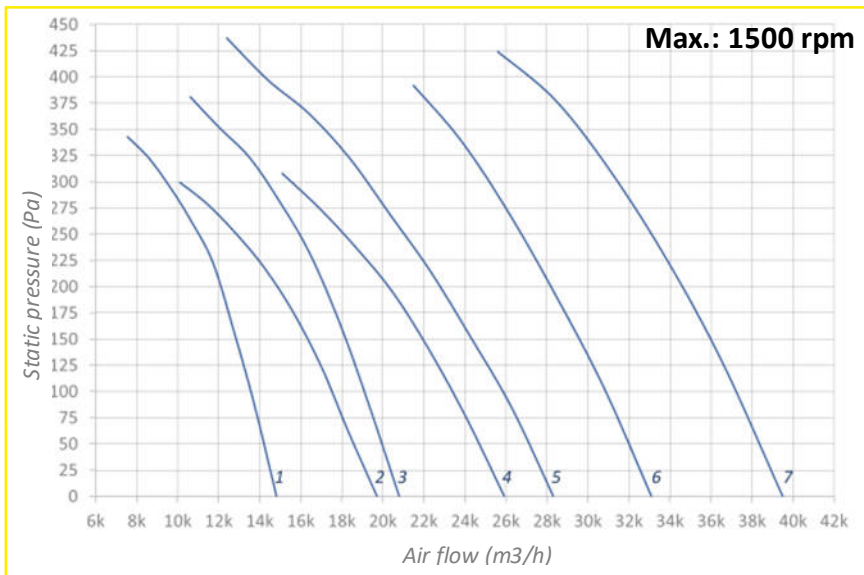
**Notes:**

Frequency: 50Hz - 60Hz  
 Voltage: 230V - 280V  
 Minimum speed: 1000 rpm  
 Maximum speed: 3000 rpm  
 Representation with maximum speed



# AXUS EC DEPORTED: Max. speed 1500 rpm

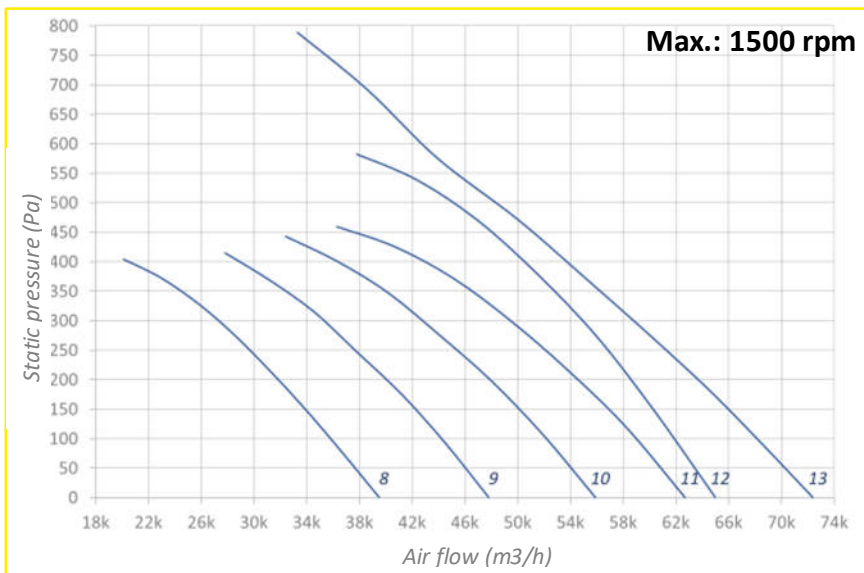
Common operating range



Curve No.	Ø mm	Power kW	Current A
1	630	1.50	3.4
2	710	1.50	3.4
3	710	2.20	5.1
4	800	2.20	5.1
5	900	3.00	6.4
6	900	4.00	8.5
7	900	5.50	11.6

**Notes:**

Frequency: 50Hz - 60Hz  
 Voltage: 400V  
 Minimum speed: 500 rpm  
 Maximum speed: 1500 rpm  
 Representation with maximum speed



Curve No.	Ø mm	Power kW	Current A
8	1000	4.00	8.5
9	1000	5.50	11.6
10	1000	7.50	15.7
11	1000	9.20	20.5
12	1000	11.00	24.5
13	1250	11.00	24.5

**Notes:**

Frequency: 50Hz - 60Hz  
 Voltage: 400V  
 Minimum speed: 500 rpm  
 Maximum speed: 1500 rpm  
 Representation with maximum speed

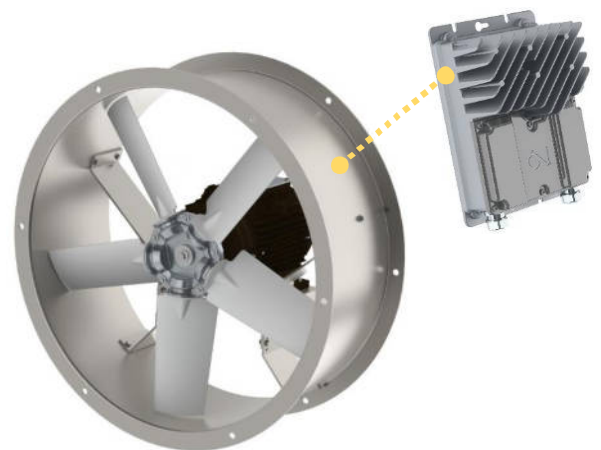
## A modular design to meet your specific requirements...



Casing with integrated inlet bellmouth...  
technical



with straight flange...



external drive in a room, etc.



## EX – BELT DRIVE

### Belt-drive mounting

To meet specific needs where the motor has to be outside the air flow, we propose our range of belt-driven fans which, by using our impeller range, can cover a wide scope of performances.

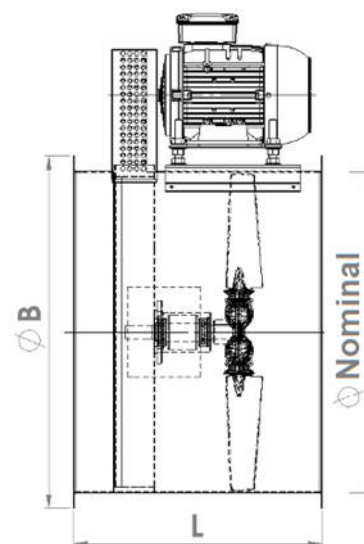
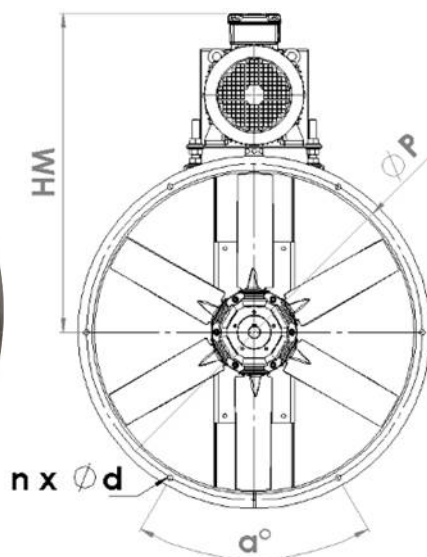
The combination of the casing diameter, the installed power and the drive ratios will be defined depending on your different constraints, available space, power, sound level, etc.

#### Standard construction:

- Housing in Z275 pre-galvanized steel
- Pre-selection of bearings and standard belt -20° to +80°C

#### Option:

- Bearing for high temperatures up to 130°C
- Sealed, greased for life or bearings with grease fittings
- Hot-dip stainless steel (304L, 306L)
- Epoxy paint



Nominal $\varnothing$ mm	B mm	n -	$\alpha$ °	d mm	P mm	L mm	HM mm	Weight* kg
400	470	6	60	12	440	500	550	44
450	520	6	60	12	490	500	550	62
500	570	6	60	12	540	550	600	88
630	704	6	60	12	670	550	670	135
710	780	6	60	12	744	550	750	138
800	885	8	45	12	850	550	850	142
900	990	12	30	15	954	690	900	203
1000	1090	12	30	15	1056	690	1010	324
1250	1375	12	30	15	1320	800	1170	729
1500	1610	16	22.5	15	1560	800	1300	990
1600	1730	16	22.5	15	1660	800	1350	1200

#### Note:

\*Weights are provided for information only and include the motor weights of the maximum power (without ancillaries).  
For diameters greater than 1250mm, contact us.



## DRYING – CENTRIFUGALS



### DESCRIPTION

We have a range from diameter 250mm to 1400mm, from a few hundred m<sup>3</sup>/h to 250,000m<sup>3</sup>/h, with motors with 2, 4 and 6 poles, 1 or 2 speeds. Our fans might also be suitable for use in geographic areas with specific electricity networks, i.e. 60 Hz.

Other motor speeds are available on request.



### APPLICATION

Clean air or slightly dusty air extraction:

- Grain drying
- Wood drying
- Potato drying



### FLUID TEMPERATURE

The standard operating temperatures are from -20°C to +40°C with a class F motor.

On request, fans fitted with a class H motor can operate in environments up to +130°C.

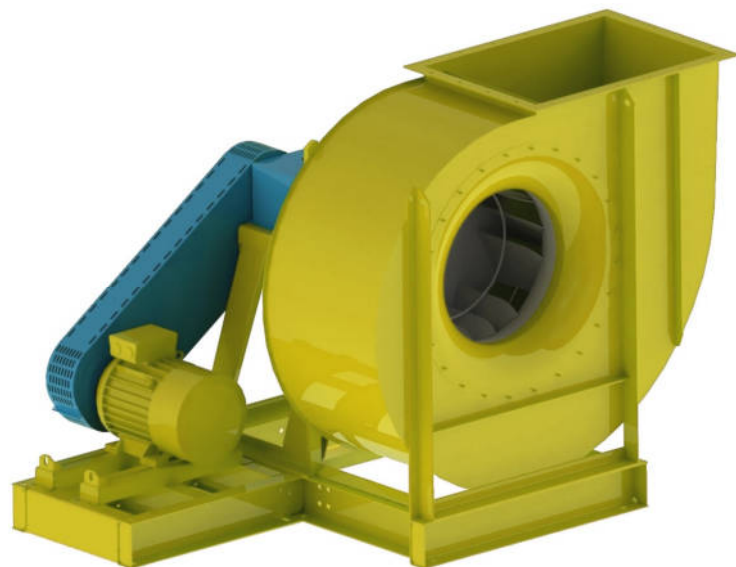


### CONSTRUCTION

Our fans are made in our factory, with Fe360 steel sheet as standard. At your request, to meet your specifications and constraints, we can supply:

- 304L or 316L stainless steel, with or without passivation
- Hot-dip galvanization
- Surface treatment with epoxy paint

Solutions with EC motors are available in direct-drive or belt-drive. Please ask us.



- ✓ *Single-inlet: RL - RM*
- ✓ *Electronically commutated*



### ANCILLARIES

In line with your requirements, we have safety guards, support feet, rigid coupling flanges, outlet backdraught dampers, on-off switch connectors, etc., to simplify your installation. See **ANCILLARIES tab** for more information.



### OPTION

We can wire motors, switch connectors, make special productions, etc. and study your requirements to meet your specifications and constraints.

**Reminder:** All conventional and normative elements are presented in the **STANDARDS-RULES-CONVENTIONS** tab. All ancillaries are presented in the **ANCILLARIES** tab at the end of the catalog. Please contact the sales team for your specific requirements.



## RL / RM SERIE – BACKWARD CURVED BLADES

Standard range

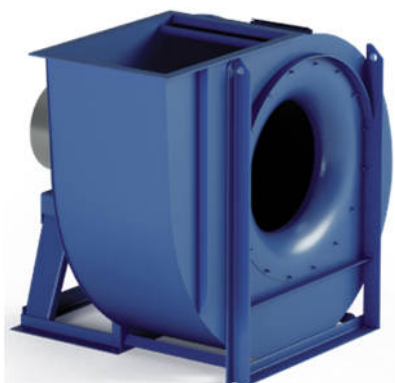
### RL

Low and medium pressure

Welded housing

Possible fan rotation (every 45° with motor on support stand or full with a flange motor)

Clean air or slightly dusty air inlet



### RM

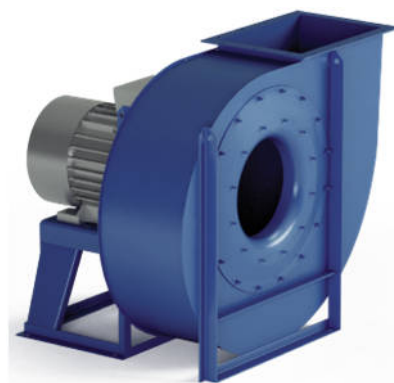
Medium pressure

Stapled housing (welding possible)

Possible fan rotation (every 45° with motor on support stand or full with a flange motor)

Ventilation for grain silos

Suction of dry and dusty air, saw dust but no filamentary material.



### Standard construction:

- Housing in painted Fe360 steel
- Statically and dynamically balanced impeller in accordance with ISO 1940 grade G6.3
- Multi-positions RD or LG from diameter 220 to 630mm (see conventions for centrifugal fans)
- For large diameters with a welded construction, the orientation must be determined when ordering.
- Foot-mounted motor (B3) for flexibility in terms of configurations and installations.
- Available in flange-mounting (B5)
- Operating temperature -10°C to +60°C

### Option:

- Reinforced construction for high-temperature operation (the impeller speed will be downgraded)
- 304L and 316L stainless steel
- Acoustic insulation
- Mobile mounting or specific adaptation





# OPERATION AT HIGH TEMPERATURE

## Speed adjustment

- Impellers and inlet bellmouth in special steels
- Adjustment of the impeller's speeds

Below are the maximum speeds (rpm) for the RL and RM series depending on the impeller class used. Operation at high temperature requires a reduction in the impeller speeds by multiplying the maximum speed by the adjustment percentage (adjustment%):

Adjustment %	Temperature °C		
4%	60	to	100
10%	100	to	150
16%	150	to	200
23%	200	to	250
30%	250	to	300
37%	300	to	350
45%	350	to	400
54%	400	to	450
64%	450	to	500

Fan	Class I	Class II	Class III	Fan	Class I	Class II	Class III
RL250	4000	5000	6000	RM220	5200	6300	
RL280	3800	4500	5300	RM250/R	5200	6300	
RL310	3600	4100	4750	RM250	5200	6300	
RL350	3250	3700	4250	RM280/R	5000	5600	
RL400/R	2950	3300	3900	RM280	5000	5600	
RL400	2950	3300	3900	RM310/R	4800	5200	
RL450/R	2750	3150	3800	RM310	4550	5000	
RL450	2550	2955	3550	RM350/R	4350	4700	
RL500/R	2350	2750	3350	RM350	4150	4500	
RL500	2250	2600	3150	RM400/R	3950	4250	
RL560/R	2100	2450	3000	RM400	3750	4000	
RL560	2000	2300	2850	RM450/R	3550	3800	
RL630/R	1850	2150	2650	RM450	3350	3600	
RL630	1750	2050	2500	RM500/R	3250	3500	
RL710/R	1900	2300	2550	RM500	3150	3400	
RL710	1800	2200	2400	RM560/R	3050	3250	3550
RL800/R	1700	2050	2300	RM560	2960	3150	3300
RL800	1600	1950	2150	RM630/R	2600	2960	3200
RL900/R	1500	1850	2000	RM630	2400	2800	3050
RL900	1450	1750	1900	RM710/R	2250	2700	2950
RL1000/R	1350	1650	1800	RM710	2100	2500	2750
RL1000	1250	1550	1700	RM800/R	2000	2400	2600
RL1120/R	1250	1350	1450	RM800	1900	2200	2400
RL1120	1200	1300	1400	RM900/R	1750	2100	2300
RL1250/R	1150	1250	1350	RM900	1650	2000	2200
RL1250	1100	1200	1300	RM1000/R	1550	1850	2050
RL1400/R	1050	1150	1250	RM1000	1470	1700	1900
RL1400	1000	1100	1200	RM1120/R	1350	1600	1750
RL1600	900	1000	1100	RM1120	1250	1485	1650
RL1800	800	900	1000	RM1250/R	1150	1350	1550
RL2000	700	800	900	RM1250	1050	1250	1470
				RM1400/R	1000	1200	1350
				RM1400	950	1150	1300
				RM1600	900	1050	1200
				RM1800	950	1050	1150
				RM2000	850	950	1050

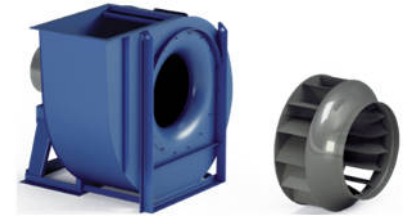


# RL SERIE – BACKWARD CURVED BLADES

Common operating range

• FLOW RATE (m³/h)

Low		Medium		High	
X	X	1000	60000	120000	250000



• TOTAL PRESSURE (Pa)

Low		Medium		High	
200	4500	X	X	X	X

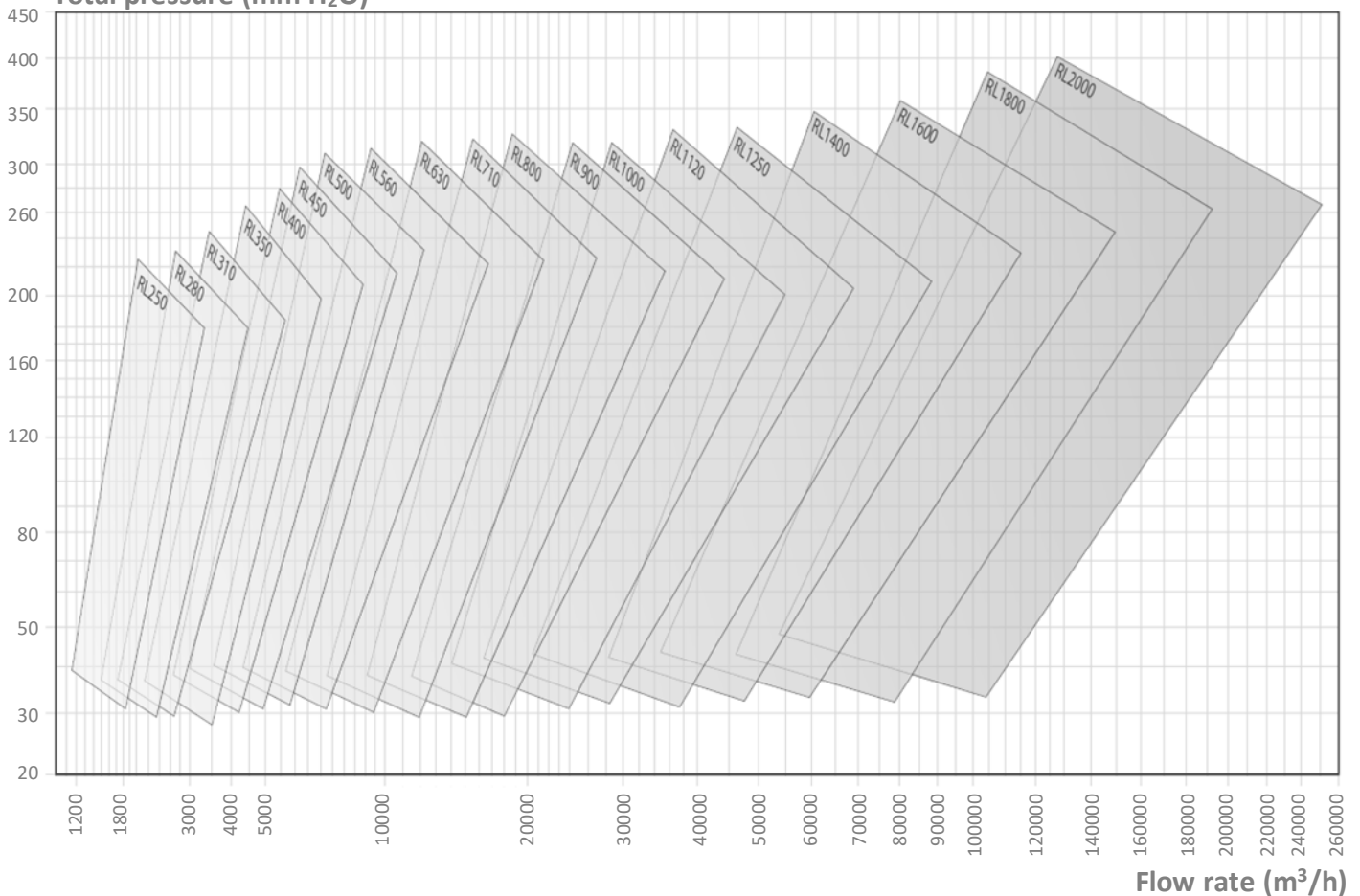
Recommended

To avoid

• APPLICATION

Domain	Industry	General	Chemical	Process	Other
	Packaging Storage	High flow Low pressure	High flow Low pressure	High flow Low pressure	Consult us
Dust level	Clean <i>Air, steam</i>	Medium <i>Air, steam</i>	High X		
Solid matter	Low X	Medium X	High X		
Filamentary material	Low X	Medium X	High X		

Total pressure (mm H<sub>2</sub>O)

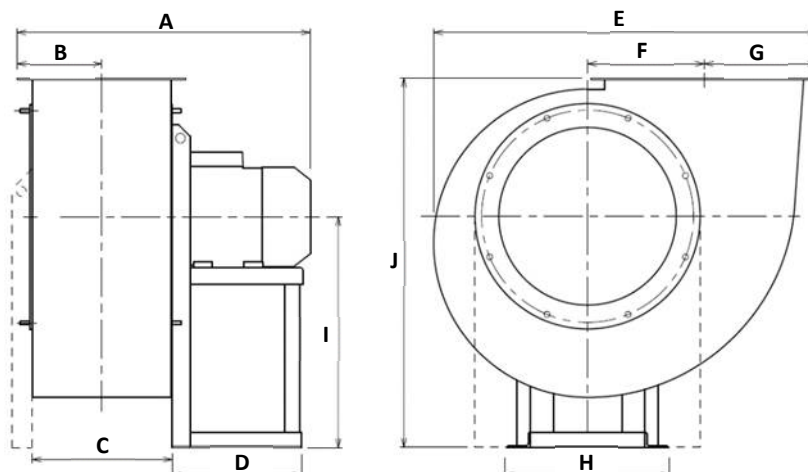






# RL DIMENSIONS

Common operating range



RL...	No. of poles	HA* mm	Inst. P kW	Mot. V rpm	Weight ** kg	A*** mm	B mm	C mm	D mm	E mm	F mm	G mm	H mm	I mm	J mm
RL310	/4	63	0.18	1350	43	452	155	234	151	653	196	201	206	400	625
RL350	/4	71	0.37	1370	65	509	169	262	195	725	216	221	225	450	705
RL400	/4	80	0.75	1400	75	565	184	294	217	798	245	242	225	500	785
RL450	/4	90	1.10	1415	94	647	202	330	251	895	275	267	260	560	880
RL500	/4	100	2.20	1440	130	718	221	370	285	997	303	294	324	600	960
RL560	/4	112	4.00	1450	158	795	253	414	280	1151	332	335	324	670	1070
RL630	/4R	132	5.50	1455	202	885	277	464	340	1282	373	369	372	750	1200
RL630	/4	132	7.50	1455	214	885	277	464	340	1282	373	369	372	750	1200
RL710	/4R	132	11.00	1460	315	1045	304	508	439	1402	427	408	826	850	1350
RL710	/4	160	15.00	1460	326	1045	304	508	439	1402	427	408	826	850	1350
RL800	/4R	180	18.50	1460	465	1188	345	570	463	1590	478	461	926	950	1510
RL800	/4	180	22.00	1460	484	1239	345	570	463	1590	478	461	926	950	1510
RL900	/4R	225	37.00	1470	840	1367	379	638	540	1770	538	509	1026	850	1480
RL900	/4	225	45.00	1470	847	1427	379	638	540	1770	538	509	1026	850	1480
RL1000	/4R	250	55.00	1475	1105	1632	418	716	600	1985	607	564	1128	950	1660
RL1000	/4	280	75.00	1480	1278	1635	418	716	690	1985	607	564	1128	950	1660
RL500	/6	80	0.55	930	117	640	221	370	217	997	303	294	225	600	960
RL560	/6	90	1.10	930	145	743	253	414	247	1151	332	335	260	670	1070
RL630	/6	112	2.20	950	180	845	277	464	280	1282	373	369	324	750	1200
RL710	/6	132	4.00	960	286	940	304	508	336	1402	427	408	826	850	1350
RL800	/6R	132	5.50	960	367	1002	345	570	336	1590	478	461	926	950	1510
RL800	/6	160	7.50	960	397	1107	345	570	439	1590	478	461	926	950	1510
RL900	/6R	160	11.00	970	556	1196	379	638	436	1770	538	509	1026	850	1480
RL900	/6	180	15.00	970	658	1328	379	638	460	1770	538	509	1026	850	1480
RL1000	/6R	200	18.50	975	879	1482	418	716	500	1985	607	564	1128	950	1660
RL1000	/6	200	22.00	975	885	1482	418	716	500	1985	607	564	1128	950	1660
RL1120	/6R	225	30.00	975	1153	1611	471	802	540	2251	684	635	1268	1060	1860
RL1120	/6	250	37.00	980	1242	1719	471	802	600	2251	684	635	1268	1060	1860
RL1250	/6R	280	55.00	985	1739	1818	520	898	690	2521	770	704	1400	1190	2090
RL1250	/6	315	75.00	985	1980	2030	520	898	800	2521	770	704	1400	1190	2090
RL1400	/6R	315	90.00	985	2630	2330	574	1008	800	2770	854	781	1560	1320	2320
RL1400	/6	315	110.00	985	2651	2330	574	1008	800	2770	854	781	1560	1320	2320
RL250	/2	71	0.55	2850	37	464	128	192	196	525	149	164	225	315	510
RL280	/2	80	1.10	2850	45	482	143	210	217	586	172	184	225	375	575
RL310	/2	90	2.20	2880	57	553	155	234	251	653	196	201	260	400	625
RL350	/2	100	3.00	2890	80	611	169	262	285	725	216	221	324	450	705
RL400	/2R	112	4.00	2950	95	664	184	294	285	798	245	242	324	500	785
RL400	/2	132	5.50	2950	116	710	184	294	345	798	245	242	372	500	785
RL450	/2R	132	7.50	2950	124	751	202	330	345	895	275	267	372	560	880
RL450	/2	160	11.00	2955	161	860	202	330	446	895	275	267	440	560	880
RL500	/2R	160	15.00	2960	187	913	221	370	446	997	303	294	440	600	960
RL500	/2	160	18.50	2960	196	913	221	370	446	997	303	294	440	600	960

**Notes:**

(\*) HA is the motor frame size.

(\*\*) Due to multiple sourcing of motors, there may be weight differences (motor in cast iron or aluminium, single-speed or dual-speed, etc.)

(\*\*\*) A is variable depending on the motorization.

For diameters greater than 1400mm, contact us.



# RM SERIE – BACKWARD CURVED BLADES

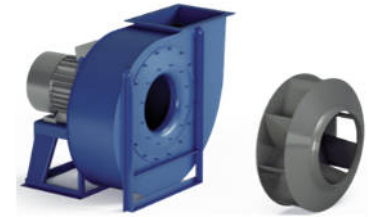
Common operating range

• FLOW RATE (m<sup>3</sup>/h)

Low		Medium		High	
360	10000	15000	60000	80000	180000

• TOTAL PRESSURE (Pa)

Low		Medium		High	
500	1000	2000	5500	X	X



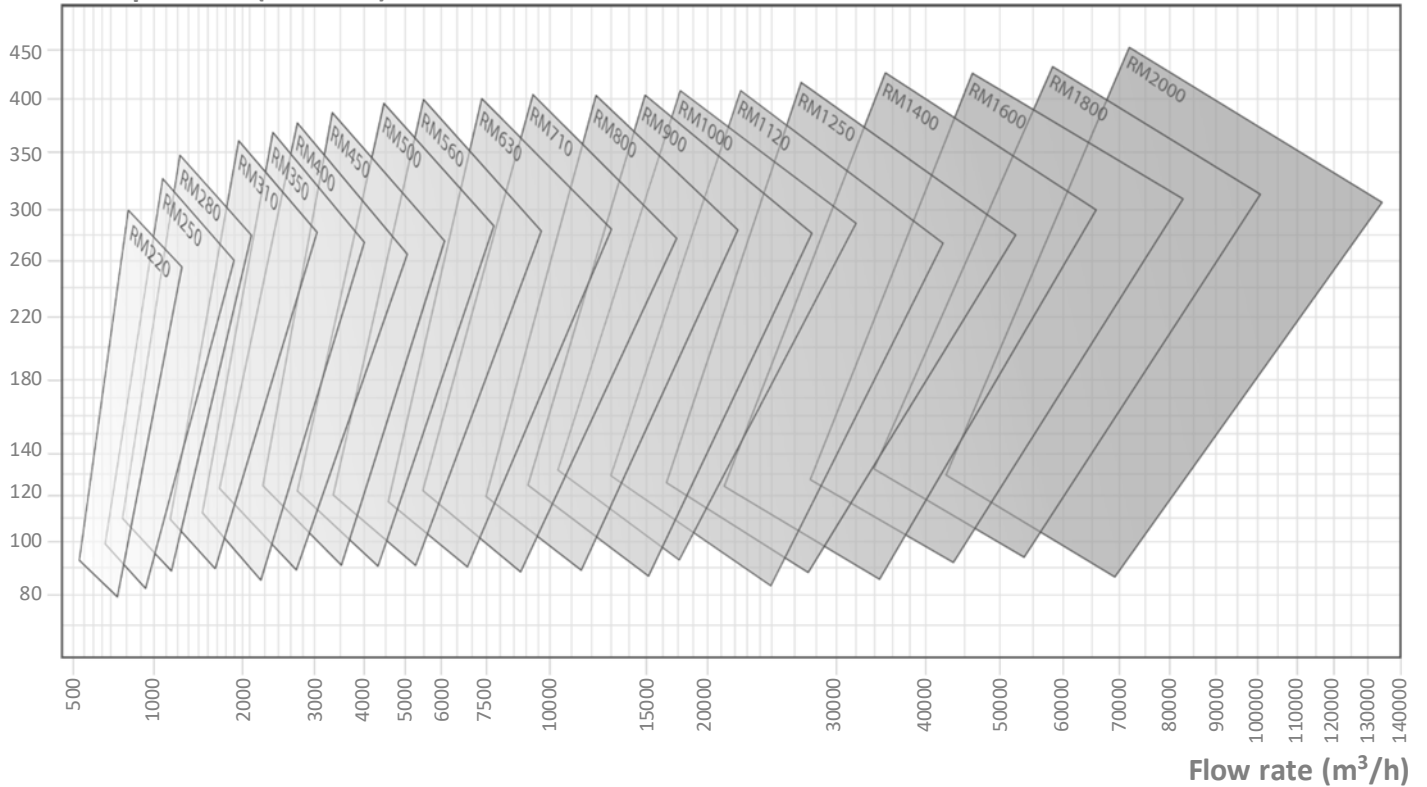
Recommended

To avoid

• APPLICATION

Domain	Industry	General	Chemical	Process	Other
	High flow Medium pressure	High flow Medium pressure	High flow Medium pressure	High flow Medium pressure	Consult us
Dust level	Clean <i>Air, steam</i>	Medium <i>Air, steam</i>	High <i>Air, steam</i>		
Solid matter	Low <i>Saw dust, wood shavings, pellets</i>	Medium <i>Saw dust, wood shavings, pellets</i>	High X		
Filamentary material	Low X	Medium X	High X		

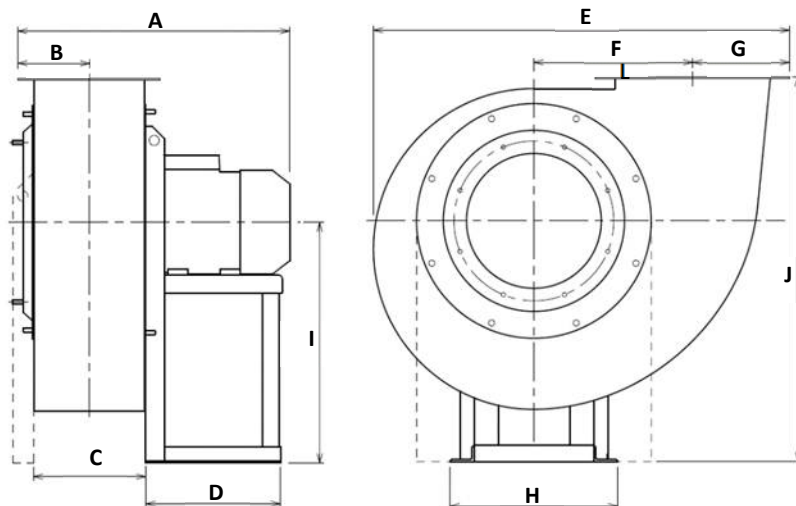
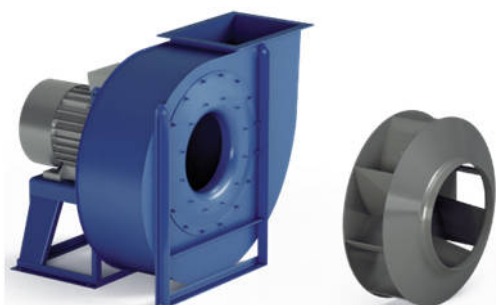
Total pressure (mm H<sub>2</sub>O)





# RM DIMENSIONS

Common operating range



RM...	No. of poles	HA* mm	Inst. P kW	Mot. V rpm	Weight ** kg	A*** mm	B mm	C mm	D mm	E mm	F mm	G mm	H mm	I mm	J mm
RM500	/4	90	1.50	1420	106	613	184	296	251	997	355	242	260	600	960
RM560	/4	100	3.00	1420	136	691	202	330	281	1141	390	267	324	670	1070
RM630	/4R	112	4.00	1440	190	752	221	370	281	1282	439	294	324	750	1200
RM630	/4	132	5.50	1460	205	792	221	370	341	1282	439	294	372	750	1200
RM710	/4R	132	7.50	1460	287	837	253	404	336	1399	500	335	826	670	1170
RM710	/4	160	11.00	1460	338	942	253	404	436	1399	500	335	826	670	1170
RM800	/4R	160	15.00	1460	504	1011	277	452	436	1570	560	369	926	755	1315
RM800	/4	180	18.50	1460	512	1092	277	452	460	1570	560	369	926	755	1315
RM900	/4R	200	30.00	1465	684	1254	304	506	500	1758	630	408	1026	850	1480
RM900	/4	225	37.00	1470	767	1236	304	506	540	1758	630	408	1026	850	1480
RM1000	/4R	225	45.00	1470	963	1378	345	568	540	1984	710	461	1128	950	1660
RM1000	/4	250	55.00	1485	1081	1486	345	568	600	1984	710	461	1128	950	1660
RM1120	/4R	280	75.00	1490	1445	1558	379	638	690	2241	800	509	1268	1060	1860
RM1120	/4	280	90.00	1490	1486	1558	379	638	690	2241	800	509	1268	1060	1860
RM800	/6R	132	4.00	955	391	906	277	452	336	1570	560	369	926	755	1315
RM800	/6	132	5.50	960	395	906	277	452	336	1570	560	369	926	755	1315
RM900	/6R	160	7.50	970	511	1065	304	506	436	1758	630	408	1026	850	1480
RM900	/6	160	11.00	970	531	1065	304	506	436	1758	630	408	1026	850	1480
RM1000	/6R	180	15.00	980	743	1279	345	568	460	1984	710	461	1128	950	1660
RM1000	/6	200	18.50	985	850	1336	345	568	500	1984	710	461	1128	950	1660
RM1120	/6R	200	22.00	985	955	1405	379	638	500	2241	800	509	1268	1060	1860
RM1120	/6	225	30.00	985	1156	1447	379	638	540	2241	800	509	1268	1060	1860
RM1250	/6R	250	37.00	990	1430	1632	418	716	600	2511	900	564	1400	1190	2090
RM1250	/6	280	45.00	990	1915	1635	418	716	690	2511	900	564	1400	1190	2090
RM1400	/6R	280	55.00	990	1850	1751	471	802	690	2780	1000	635	1560	1320	2320
RM1400	/6	315	75.00	995	2366	1963	471	802	800	2780	1000	635	1560	1320	2320
RM250	/2	71	0.37	2820	26	396	110	154	195	525	175	139	225	315	510
RM280	/2	80	0.75	2850	35	438	119	172	217	583	202	151	225	375	575
RM310	/2	90	1.50	2920	45	505	128	192	251	649	229	164	260	400	625
RM350	/2	90	2.20	2920	70	530	143	212	251	725	253	184	260	450	705
RM400	/2	112	4.00	2940	93	606	155	236	285	798	286	201	324	500	785
RM450	/2R	132	5.50	2940	115	673	169	264	345	895	321	221	372	560	880
RM450	/2	132	7.50	2940	118	673	169	264	345	895	321	221	372	560	880
RM500	/2R	160	11.00	2950	175	810	184	296	446	997	355	242	440	600	960
RM500	/2	160	15.00	2950	180	810	184	296	446	997	355	242	440	600	960
RM560	/2R	180	18.50	2960	220	857	202	330	441	1141	390	267	440	670	1070
RM560	/2	180	22.00	2960	276	938	202	330	465	1141	390	267	488	670	1070

**Notes:**

(\*) HA is the motor frame size.

(\*\*) Due to multiple sourcing of motors, there may be weight differences (motor in cast iron or aluminium, single-speed or dual-speed, etc.)

(\*\*\*) A is variable depending on the motorization.

For diameters greater than 1400mm, contact us.



## RL / RM EC SERIE – ELECTRONICALLY COMMUTATED

### Integrated and External EC

For RL and RM models, a version with EC motorization is available. The combination of electronic management and a permanent magnet motor promotes energy savings by reducing electricity consumption. The acoustic level is also optimized for surrounding comfort.

AREM EC centrifugal fans are designed for simple use (integrated EC). They are also available in expert mode for complete management with programmable controllers via Modbus communication and protocols (external EC).

#### Characteristics:

- Diameter from 250 to 630mm
- EC solutions with integrated or external drive
- Electronic management and communication via ModBus RS485
- Motor speed variation with 0-10V input signal
- Fast connection terminal blocks

#### Integrated EC



- ✓ Drive integrated in the motor
- ✓ Off / On: contact 1 or 0
- ✓ Speed feedback signal: 3 pulses/rev
- ✓ Motor fault code via Modbus
- ✓ Modbus connection: terminal blocks
- ✓ Temperature: from -20 to 45°C

#### External EC



- ✓ Drive attached to the casing
- ✓ On / Off: 1V input signal detection
- ✓ Speed feedback signal: 1 pulse/rev
- ✓ Motor fault code via Modbus
- ✓ Modbus connection: terminal blocks or RJ12 plug
- ✓ Temperature: from -40 to 45°C
- ✓ 2x digital inputs: terminal blocks
  - On / Off
  - Default reset
  - Booster mode (full motor speed)
- ✓ 1x digital output: terminal blocks
  - Tachymeter
  - In operation LED indicator
  - Fault LED indicator

#### Factory settings:

- In the external EC version, the inputs and outputs are not configured by default.

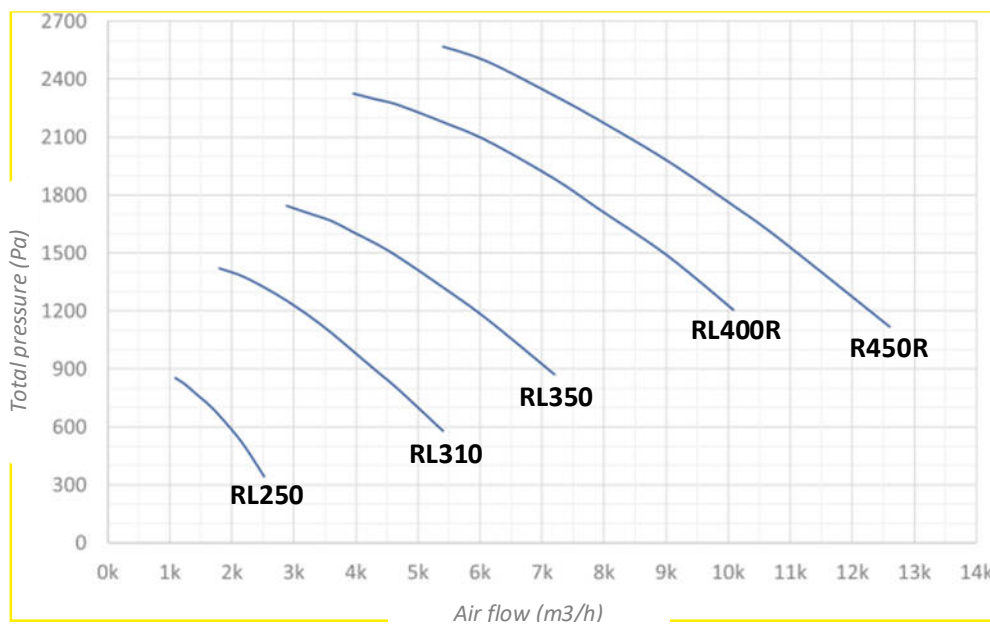
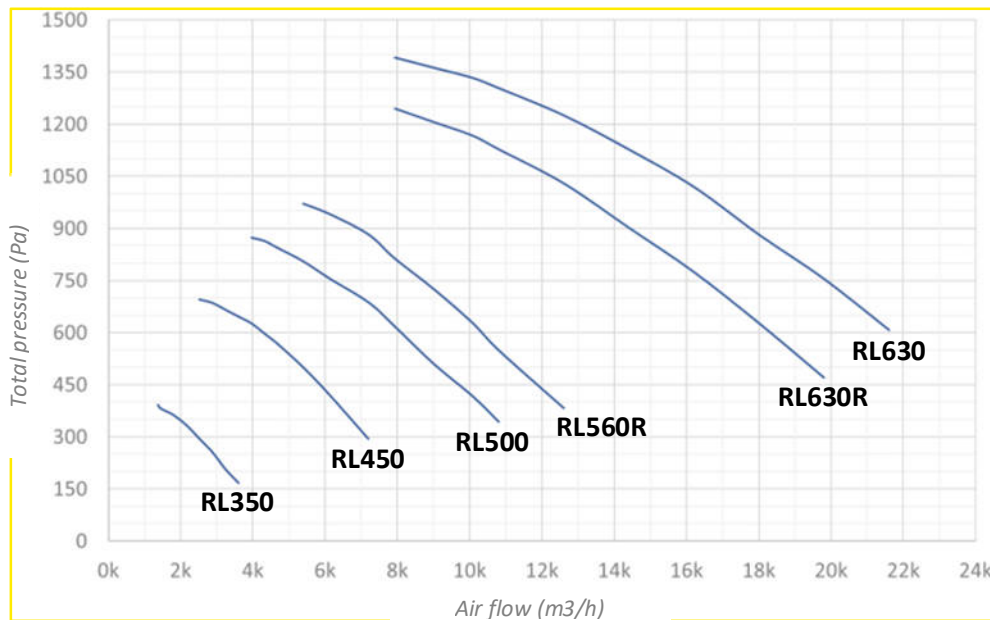
Different solutions are proposed to meet specific requests. Based on the standard range, we can build tailor-made products to satisfy your specific applications.



# RL EC PERFORMANCES

Common operating range

RM...	HA mm	Inst. P kW	Current A	Voltage V (50/60Hz)	Motor V. min. rpm	Motor V. max. rpm
RL350	71	0.40	2.8	1x 230/280V	700	1460
RL450	90	1.10	7.0	1x 230/280V	700	1460
RL500	100	2.20	5.1	3x 400/440V	700	1460
RL560R	100	3.00	6.4	3x 400/440V	700	1460
RL630R	132	5.00	11.6	3x 400/440V	700	1460
RL630	132	7.50	15.7	3x 400/440V	700	1460
RL250	71	0.80	4.8	1x 230/280V	1400	2960
RL310	90	2.20	14.0	1x 230/280V	1400	2960
RL350	100	3.00	6.4	3x 400/440V	1400	2960
RL400	132	5.50	11.6	3x 400/440V	1400	2960
RL450R	132	7.50	15.7	3x 400/440V	1400	2960



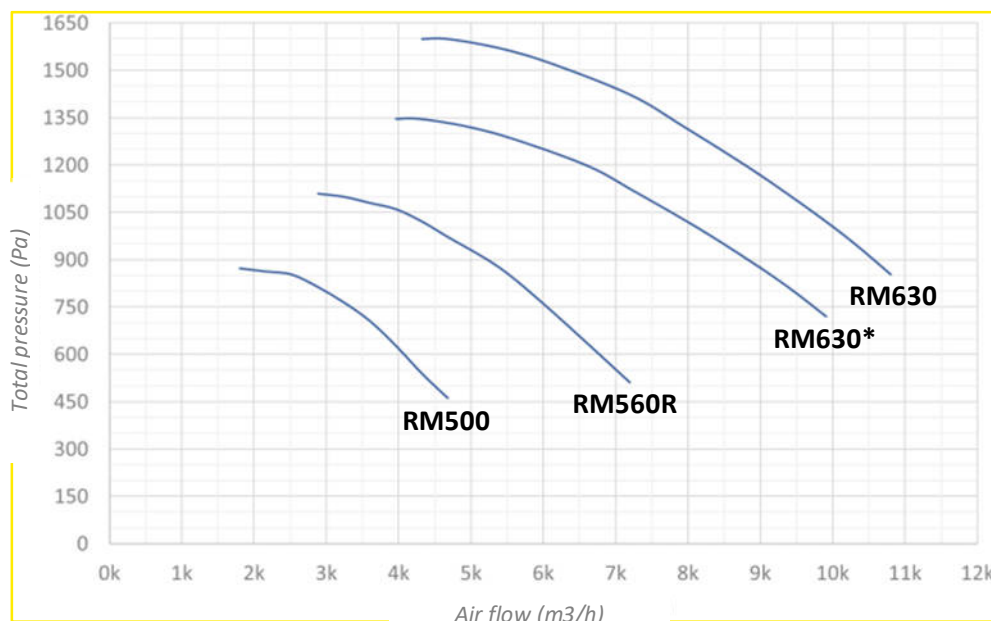


# RM EC PERFORMANCES

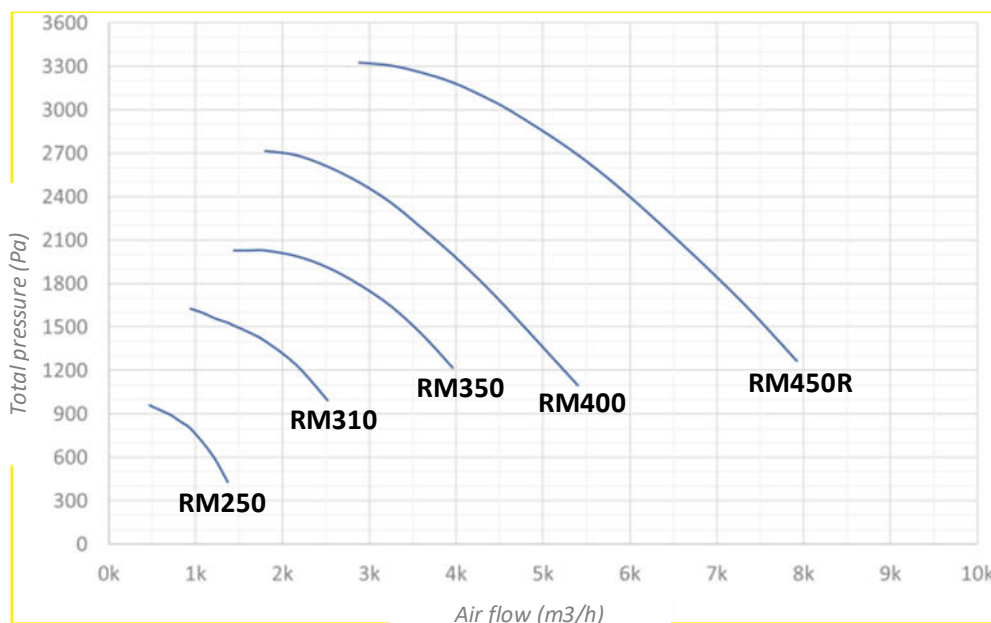
Common operating range

RM...	HA mm	Inst. P kW	Current A	Voltage V (50/60Hz)	Motor V. min. rpm	Motor V. max. rpm
RM500R	71	0.40	2.8	1x 230/280V	700	1460
RM560R	90	1.10	7.0	1x 230/280V	700	1460
RM630*	100	2.20	5.1	3x 400/440V	700	1460
RM630	100	3.00	6.4	3x 400/440V	700	1460
RM250	71	0.80	4.8	1x 230/280V	1400	2960
RM310	90	2.20	14.0	1x 230/280V	1400	2960
RM350	100	3.00	6.4	3x 400/440V	1400	2960
RM400R	132	5.50	11.6	3x 400/440V	1400	2960
RM450R	132	7.50	15.7	3x 400/440V	1400	2960

RM630\* is identical to RM630. The installed power is lower with a maximum speed of rotation of 1340 rpm.



Variable from 700 to 1460



Variable from 1400 to 2960

# AREM

THE VENTILATION PERFORMANCE

INTERNATIONAL

**PRESENCE**

● FINLAND

● RUSSIA

NETHERLANDS

GERMANY

● POLAND

● BELGIUM

AUSTRIA

● HUNGARY

● SWITZERLAND

● ROMANIA

● ITALY

● SPAIN

● PORTUGAL

● ALGERIA

● TUNISIA

● MOROCCO

● EGYPT

HEAD OFFICE: Saint Brisson Sur Loire

SALES OFFICES: PARIS - LYON - WEST - EAST

Z. I. - Chemin des Aisières

45500 Saint Brisson Sur Loire, FRANCE

Tel.: +33 (0)2 38 36 71 05 - Fax: +33 (0)2 38 36 70 65

[www.arem.fr](http://www.arem.fr)