


ZC SERIE – STRAIGHT RADIAL BLADES


Common operating range

- FLOW RATE (m³/h)**

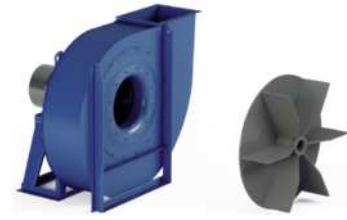


Low		Medium		High	
1500	3000	5000	20000	X	X

- TOTAL PRESSURE (Pa)**



Low		Medium		High	
X	X	1000	4500	X	X



Recommended

To avoid

- APPLICATION**

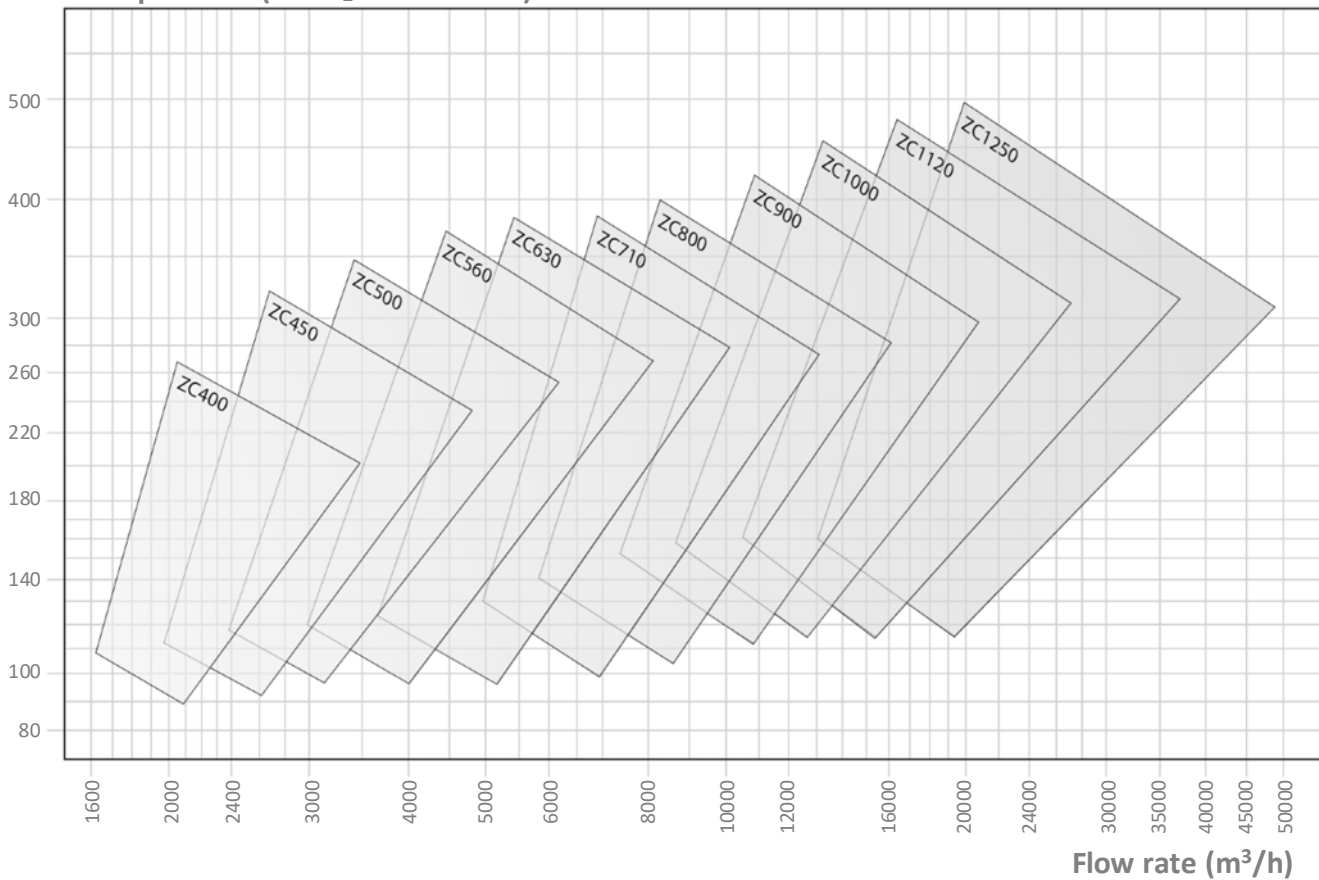
Domain	Industry	General	Chemical	Process	Other
	<i>Pneumatic</i>	<i>Medium flow Medium pressure</i>	X	<i>Medium flow Medium pressure</i>	<i>Consult us</i>

Dust level	Clean	Medium	High
	<i>Air, steam</i>	<i>Air, steam</i>	<i>Air, steam</i>

Solid matter	Low	Medium	High
	<i>Saw dust, wood shavings</i>	<i>Saw dust, wood shavings</i>	X

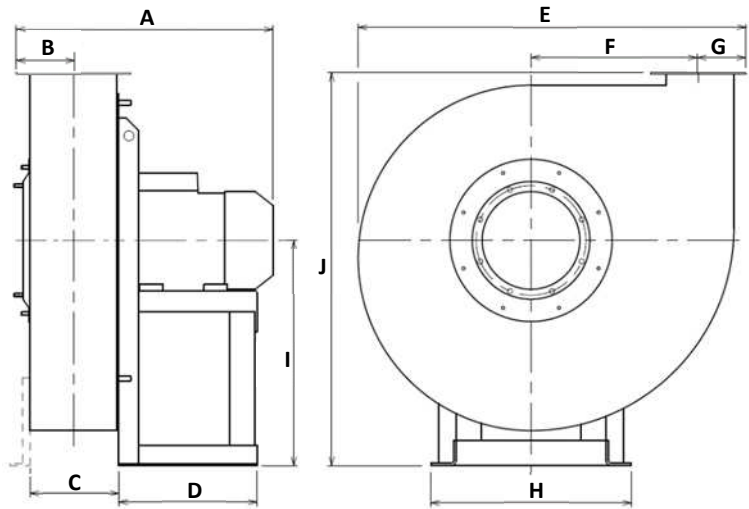
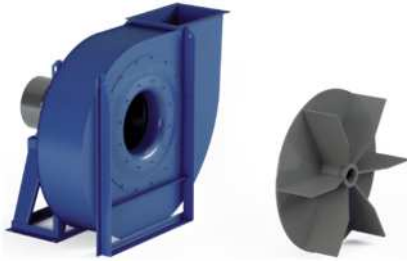
Filamentary material	Low	Medium	High
	<i>Fiber, thread, textiles</i>	X	X

Total pressure (mmH₂O or x9.79Pa)



ZC DIMENSIONS

General dimensions



ZC...	No. of poles	HA* mm	Inst. P kW	Mot. V rpm	Weight ** kg	A*** mm	B mm	C mm	D mm	E mm	F mm	G mm	H mm	I mm	J mm
ZC560	/4	112	4.00	1440	154	647	169	266	281	1141	436	221	324	670	1070
ZC630	/4R	132	5.50	1460	194	718	184	296	341	1272	490	242	372	750	1200
ZC630	/4	132	7.50	1460	195	718	184	296	341	1272	490	242	372	750	1200
ZC710	/4R	160	11.00	1460	332	860	202	322	436	1402	558	267	826	670	1170
ZC710	/4	160	15.00	1480	345	860	202	322	436	1402	558	267	826	670	1170
ZC800	/4R	180	22.00	1480	512	1050	221	360	460	1590	625	294	926	755	1315
ZC800	/4	200	30.00	1480	614	1107	221	360	500	1590	625	294	926	755	1315
ZC900	/4R	225	37.00	1480	640	1193	253	404	540	1758	703	335	1026	850	1480
ZC900	/4	225	45.00	1480	665	1193	253	404	540	1758	703	335	1026	850	1480
ZC1000	/4R	225	45.00	1480	924	1262	277	452	540	1973	791	369	1128	950	1660
ZC1000	/4	250	55.00	1480	1011	1364	277	452	600	1973	791	369	1128	950	1660
ZC400	/2R	112	4.00	2940	80	557	128	194	285	798	319	164	324	500	785
ZC400	/2	132	5.50	2940	92	597	128	194	345	798	319	164	372	500	785
ZC450	/2R	132	7.50	2940	104	622	143	214	345	895	357	184	372	560	880
ZC450	/2	160	11.00	2960	148	727	143	214	446	895	357	184	440	560	880
ZC500	/2R	160	11.00	2960	174	751	155	238	446	997	396	201	440	600	960
ZC500	/2R	160	15.00	2960	178	751	155	238	446	997	396	201	440	600	960
ZC500	/2	160	18.50	2960	191	751	155	238	446	997	396	201	440	600	960
ZC560	/2R	180	22.00	2960	271	873	169	266	465	1141	436	221	488	670	1070
ZC560	/2	200	30.00	2960	366	981	169	266	500	1141	436	221	568	670	1070

Notes:

(*) HA is the motor frame size.

(**) Due to multiple sourcing of motors, there may be weight differences (motor in cast iron or aluminium, single-speed or dual-speed, etc.)

(***) A is variable depending on the motorization.

For diameters greater than 1000mm, contact us.