


ZA SERIE – CURVED RADIAL BLADES


Common operating range

• FLOW RATE (m³/h)



Low		Medium		High	
180	3600	X	X	X	X

• TOTAL PRESSURE (Pa)



Low		Medium		High	
X	X	1400	4000	5000	10000



Recommended
To avoid

• APPLICATION

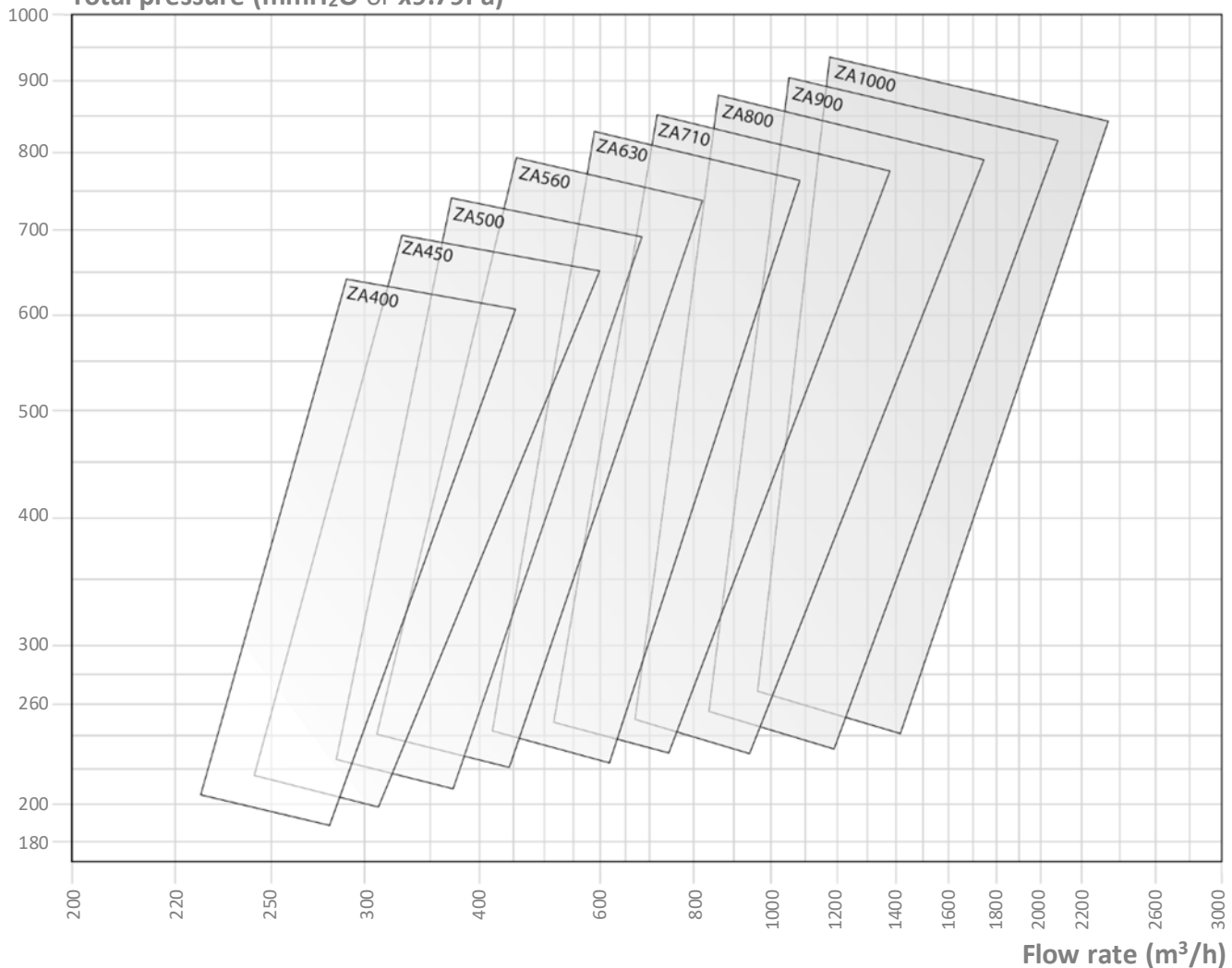
Domain	Industry	General	Chemical	Process	Other
	<i>Pneumatic</i>	<i>Low flow rate High pressure</i>	X	<i>Low flow rate High pressure</i>	<i>Consult us</i>

Dust level	Clean	Medium	High
	<i>Air, steam</i>	<i>Air, steam</i>	X

Solid matter	Low	Medium	High
	<i>Saw dust, wood shavings</i>	<i>Saw dust, wood shavings</i>	X

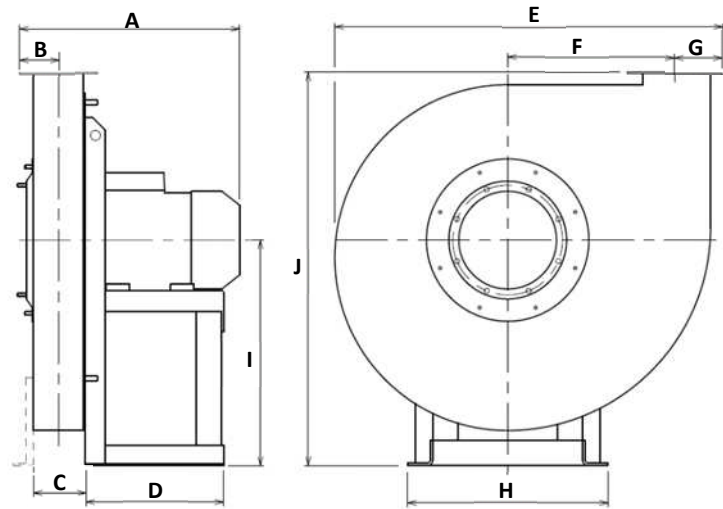
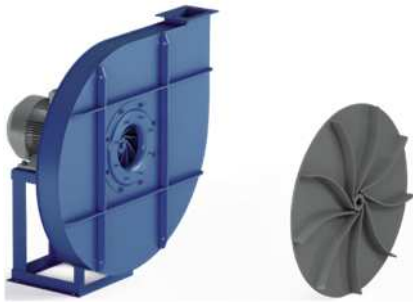
Filamentary material	Low	Medium	High
	<i>Fibre, thread, textiles</i>	<i>Fiber, thread, textiles</i>	X

Total pressure (mmH₂O or x9.79Pa)



ZA DIMENSIONS

General dimensions



ZA...	No. of poles	HA* mm	Inst. P kW	Mot. V rpm	Weight ** kg	A*** mm	B mm	C mm	D mm	E mm	F mm	G mm	H mm	I mm	J mm
ZA800	/4R	100	3.00	1420	195	484	101	144	276	1232	551	128	324	710	1240
ZA800	/4	112	4.00	1440	202	505	101	144	276	1232	551	128	324	710	1240
ZA900	/4R	132	5.50	1455	307	562	110	160	336	1386	620	139	372	800	1400
ZA900	/4	132	7.50	1460	341	562	110	160	336	1386	620	139	372	800	1400
ZA1000	/4R	132	7.50	1460	370	581	119	180	336	1531	690	151	372	900	1570
ZA1000	/4	160	11.00	1460	410	686	119	180	436	1531	690	151	440	900	1570
ZA400	/2	80	0.75	2820	39	336	65	76	217	632	273	78	225	375	655
ZA400	/2	80	1.10	2845	39	336	65	76	217	632	273	78	225	375	655
ZA450	/2	80	1.10	2845	42	344	69	84	217	700	305	83	225	400	700
ZA450	/2	90	1.50	2870	45	391	69	84	251	700	305	83	260	400	700
ZA500	/2	90	2.20	2900	55	400	73	94	251	775	342	89	260	450	785
ZA500	/2	100	3.00	2940	63	431	73	94	285	775	342	89	324	450	785
ZA560	/2	100	3.00	2940	89	442	78	106	285	873	387	96	324	500	875
ZA560	/2	112	4.00	2950	100	463	78	106	285	873	387	96	324	500	875
ZA630	/2	132	5.50	2950	134	518	88	116	345	985	436	108	372	560	985
ZA630	/2	132	7.50	2950	134	518	88	116	345	985	436	108	372	560	985
ZA710	/2	132	7.50	2950	202	531	94	130	336	1098	488	118	372	630	1105
ZA710	/2	160	11.00	2955	218	636	94	130	436	1098	488	118	440	630	1105
ZA800	/2R	160	15.00	2960	262	650	101	144	436	1232	551	128	440	710	1240
ZA800	/2	160	18.50	2960	277	650	101	144	436	1232	551	128	440	710	1240

Notes:

(*) HA is the motor frame size.

(**) Due to multiple sourcing of motors, there may be weight differences (motor in cast iron or aluminium, single-speed or dual-speed, etc.)

(***) A is variable depending on the motorization.

For diameters greater than 1000mm, contact us.