


VG SERIE – BACKWARD CURVED BLADES


Common operating range

- FLOW RATE (m³/h)**

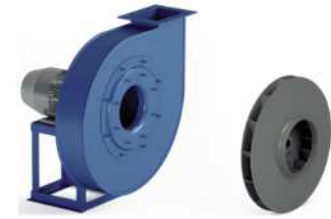


Low		Medium		High	
300	2000	5000	45000	X	X

- TOTAL PRESSURE (Pa)**



Low		Medium		High	
X	X	X	X	750	25000



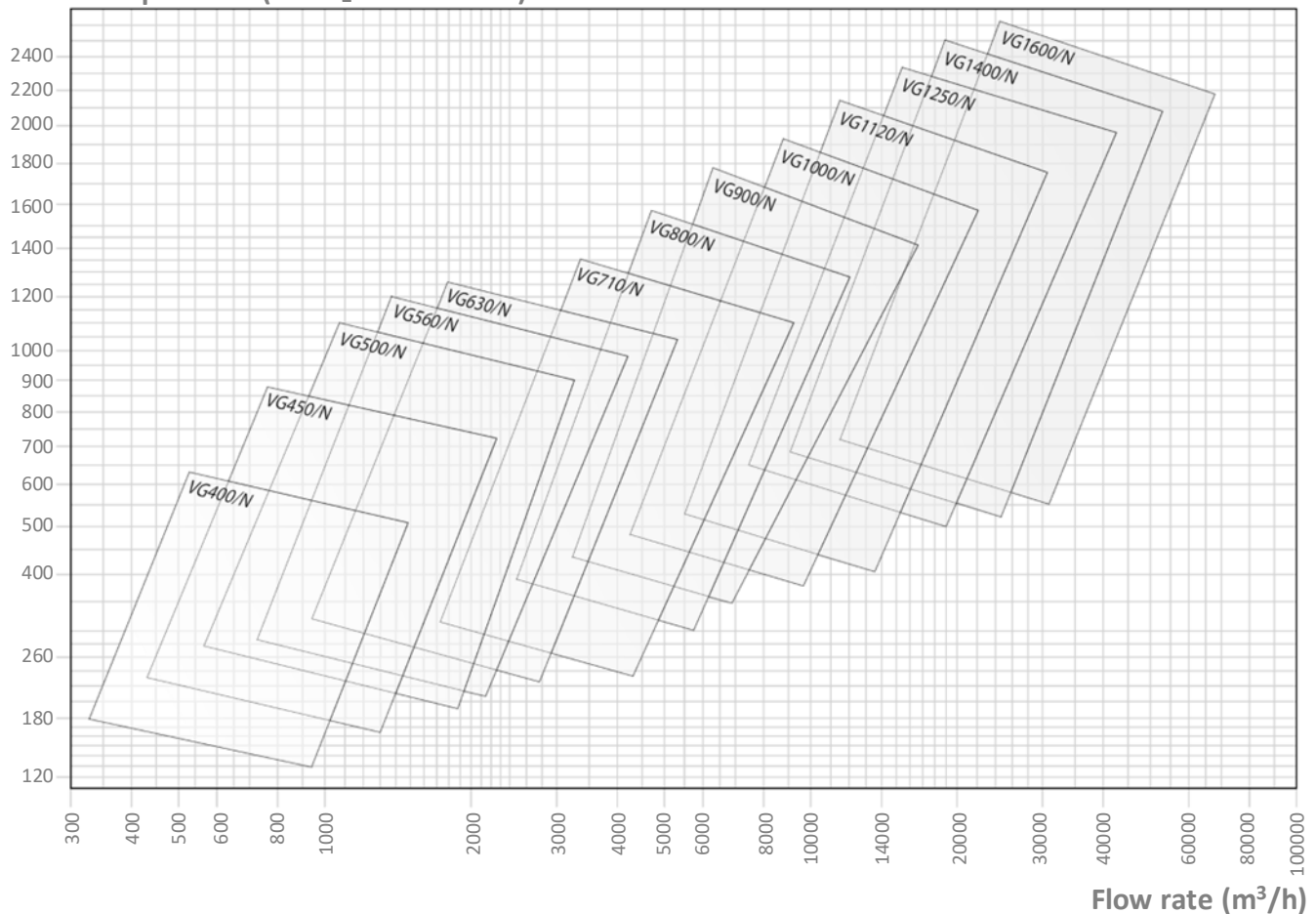
Recommended

To avoid

- APPLICATION**

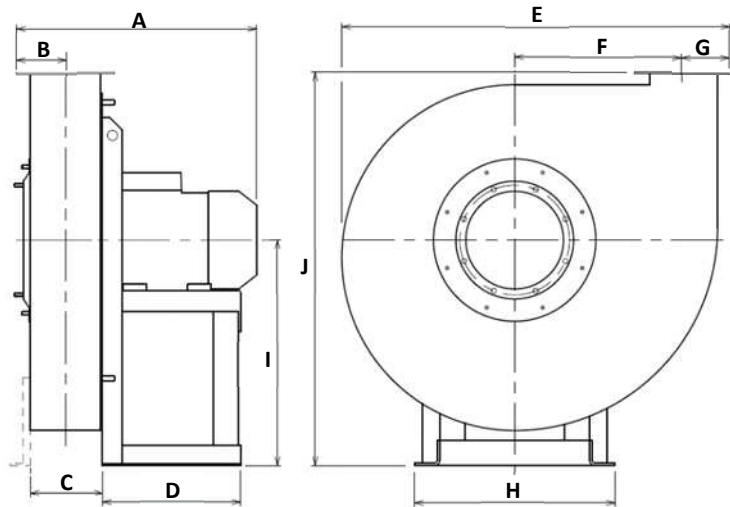
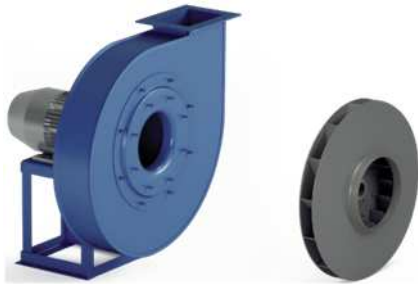
Domain	Industry	General	Chemical	Process	Other
	<i>Pneumatic Pressurization Drying</i>	<i>Medium flow High pressure</i>	<i>Ovens Chemical</i>	<i>Foundry Pulp and paper mills</i>	<i>Consult us</i>
Dust level	Clean <i>Air, steam</i>		Medium <i>Air, steam</i>		High X
Solid matter	Low X		Medium X		High X
Filamentary material	Low X		Medium X		High X

Total pressure (mmH₂O or x9.79Pa)



VG DIMENSIONS

General dimensions



VG...	No. of poles	HA* mm	Inst. P kW	Mot. V rpm	Weight ** kg	A*** mm	B mm	C mm	D mm	E mm	F mm	G mm	H mm	I mm	J mm
VG400	/2	90	1.50	2920	45	415	78	102	251	640	261	96	260	375	655
VG450	/2	90	2.20	2920	60	424	88	112	251	705	285	108	260	400	700
VG500	/2R	100	3.00	2920	80	468	94	126	285	780	318	118	324	450	785
VG500	/2	112	4.00	2940	88	489	94	126	285	780	318	118	324	450	785
VG560	/2R	132	5.50	2940	115	544	101	142	345	880	360	128	372	500	875
VG560	/2	132	7.50	2950	120	544	101	142	345	880	360	128	372	500	875
VG630	/2R	160	11.00	2960	165	666	110	158	446	985	406	139	440	560	985
VG630	/2	160	11.00	2960	172	666	110	158	446	985	406	139	440	560	985
VG630	/2	160	15.00	2960	172	666	110	158	446	985	406	139	440	560	985
VG710	/2R	160	18.50	2960	232	684	119	176	436	1098	454	151	440	630	1105
VG710	/2R	180	22.00	2960	288	765	119	176	460	1098	454	151	488	630	1105
VG710	/2	180	22.00	2960	293	765	119	176	460	1098	454	151	488	630	1105
VG710	/2	200	30.00	2970	383	873	119	176	500	1098	454	151	568	630	1105
VG800	/2R	200	30.00	2970	472	893	128	198	500	1232	513	164	568	710	1240
VG800	/2R	200	37.00	2970	472	893	128	198	500	1232	513	164	568	710	1240
VG800	/2	200	37.00	2970	439	893	128	198	500	1232	513	164	568	710	1240
VG800	/2	225	45.00	2970	553	935	128	198	540	1232	513	164	616	710	1240
VG900	/2R	225	45.00	2970	689	960	143	218	540	1390	578	184	616	800	1400
VG900	/2R	250	55.00	2970	774	1068	143	218	600	1390	578	184	690	800	1400
VG900	/2	250	55.00	2970	784	1068	143	218	600	1390	578	184	690	800	1400
VG900	/2	280	75.00	2970	914	1071	143	218	697	1390	578	184	750	800	1400
VG1000	/2R	280	90.00	2970	1082	1095	155	240	697	1540	648	201	750	900	1570
VG1000	/2R	315	110.00	2980	1242	1307	155	240	800	1540	648	201	865	900	1570
VG1000	/2	315	110.00	2980	1246	1307	155	240	800	1540	648	201	865	900	1570
VG1000	/2	315	132.00	2980	1406	1307	155	240	800	1540	648	201	865	900	1570

Notes:

(*) HA is the motor frame size.

(**) Due to multiple sourcing of motors, there may be weight differences (motor in cast iron or aluminium, single-speed or dual-speed, etc.)

(***) A is variable depending on the motorization.

For diameters greater than 1000mm, contact us.