


# VC SERIE – BACKWARD CURVED BLADES


Common operating range

- FLOW RATE (m<sup>3</sup>/h)**

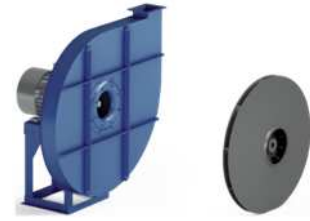


Low		Medium		High	
150	2000	3000	10000	X	X

- TOTAL PRESSURE (Pa)**



Low		Medium		High	
X	X	X	X	1600	28000



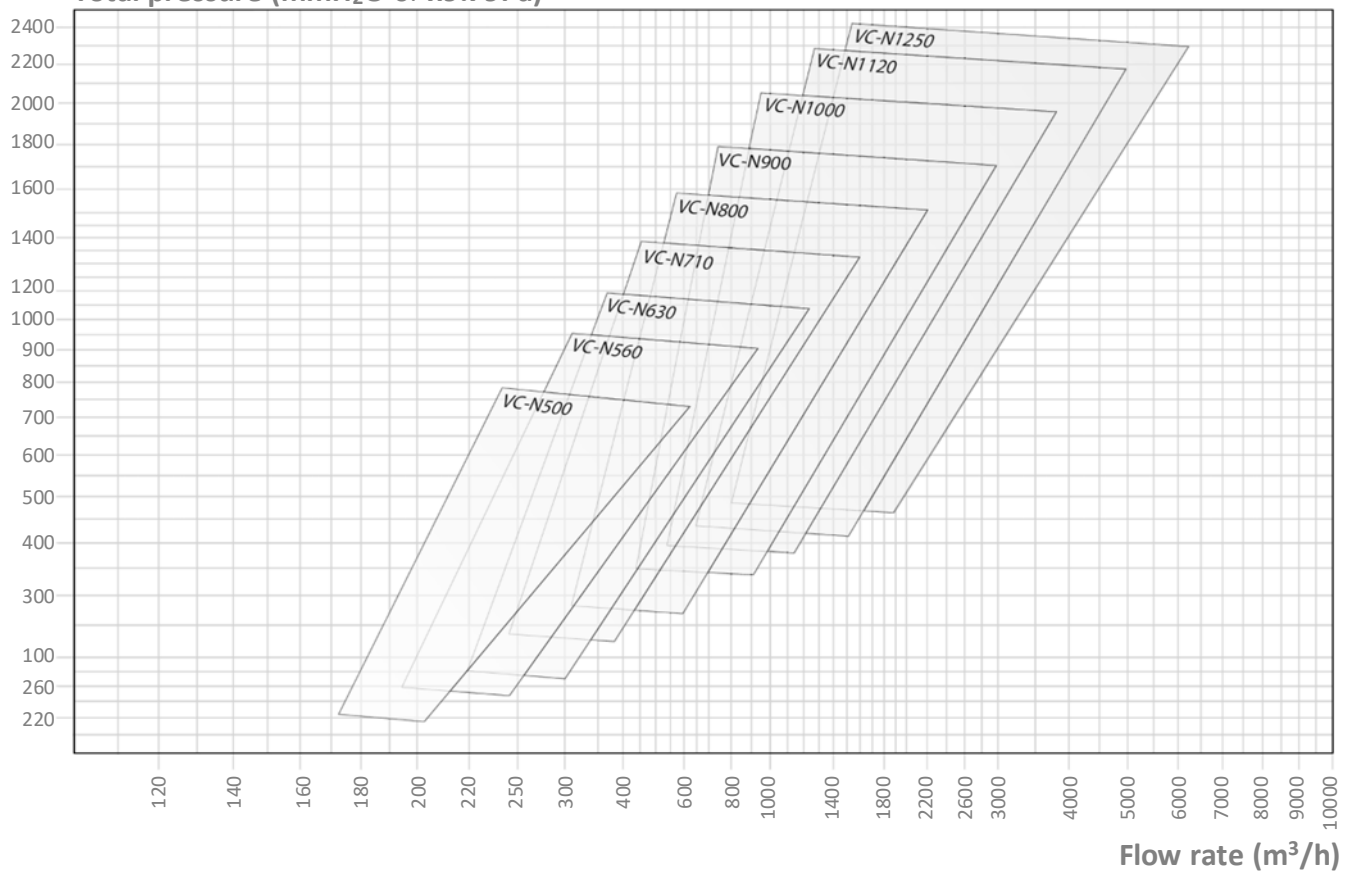
Recommended

To avoid

- APPLICATION**

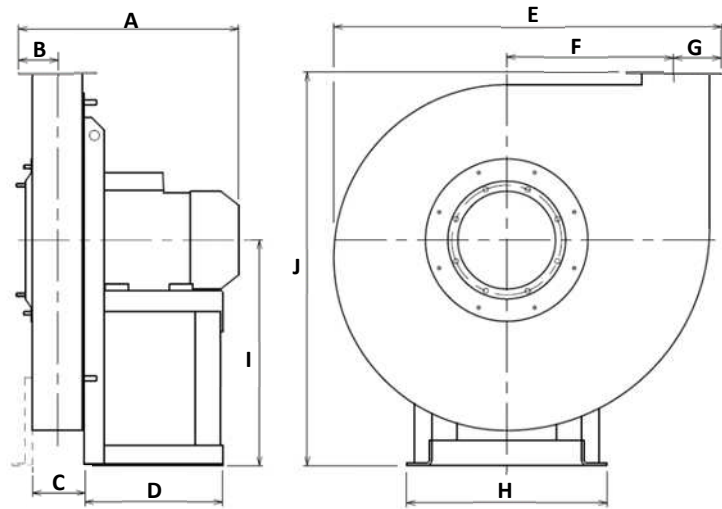
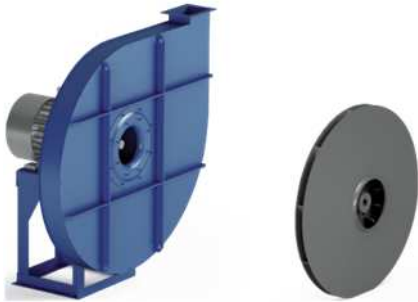
Domain	Industry	General	Chemical	Process	Other
	<i>Pneumatic Pressurization Drying</i>	<i>Medium flow High pressure</i>	<i>Ovens Chemical</i>	<i>Foundry Pulp and paper mills</i>	<i>Consult us</i>
Dust level	Clean <i>Air, steam</i>		Medium <i>Air, steam</i>		High X
Solid matter	Low X		Medium X		High X
Filamentary material	Low X		Medium X		High X

Total pressure (mmH<sub>2</sub>O or x9.79Pa)



# VC DIMENSIONS

## General dimensions



VC...	No. of poles	HA* mm	Inst. P kW	Mot. V rpm	Weight ** kg	A*** mm	B mm	C mm	D mm	E mm	F mm	G mm	H mm	I mm	J mm
VC500	/2R	80	1.10	2845	40	344	69	84	214	775	347	83	225	450	785
VC500	/2	90	1.50	2845	43	391	69	84	251	775	347	83	260	450	785
VC560	/2R	90	1.50	2845	66	401	73	96	251	872	393	89	260	500	875
VC560	/2	90	2.20	2890	69	401	73	96	251	872	393	89	260	500	875
VC630	/2R	100	3.00	2900	118	442	78	106	285	979	443	96	324	560	985
VC630	/2R	112	4.00	2900	132	463	78	106	285	979	443	96	324	560	985
VC630	/2	112	4.00	2900	133	463	78	106	285	979	443	96	324	560	985
VC630	/2	132	5.50	2925	143	503	78	106	345	979	443	96	372	560	985
VC710	/2R	132	5.50	2925	200	518	88	116	336	1098	497	108	372	630	1105
VC710	/2R	132	7.50	2930	200	518	88	116	336	1098	497	108	372	630	1105
VC710	/2	132	7.50	2930	204	518	88	116	336	1098	497	108	372	630	1105
VC710	/2	160	11.00	2940	238	623	88	116	436	1098	497	108	440	630	1105
VC800	/2R	132	7.50	2930	214	530	94	128	336	1232	560	118	372	710	1240
VC800	/2R	160	11.00	2940	248	635	94	128	436	1232	560	118	440	710	1240
VC800	/2	160	11.00	2940	254	635	94	128	436	1232	560	118	440	710	1240
VC800	/2	160	15.00	2950	254	635	94	128	436	1232	560	118	440	710	1240
VC900	/2R	160	15.00	2950	333	649	101	142	436	1386	631	128	440	800	1400
VC900	/2R	160	18.50	2950	345	649	101	142	436	1386	631	128	440	800	1400
VC900	/2	160	18.50	2950	348	649	101	142	436	1386	631	128	440	800	1400
VC900	/2	180	22.00	2960	404	730	101	142	460	1386	631	128	488	800	1400
VC1000	/2R	200	30.00	2960	570	856	110	160	500	1535	707	139	568	900	1570
VC1000	/2R	200	37.00	2960	570	856	110	160	500	1535	707	139	568	900	1570
VC1000	/2	200	37.00	2960	577	856	110	160	500	1535	707	139	568	900	1570
VC1000	/2	225	45.00	2970	657	898	110	160	540	1535	707	139	616	900	1570
VC1120	/2R	225	45.00	2970	725	918	119	182	540	1711	791	151	616	1000	1750
VC1120	/2R	250	55.00	2980	815	1026	119	182	600	1711	791	151	690	1000	1750
VC1120	/2	250	55.00	2980	815	1026	119	182	600	1711	791	151	690	1000	1750
VC1120	/2	280	75.00	2980	945	1029	119	182	697	1711	791	151	750	1000	1750

### Notes:

(\*) HA is the motor frame size.

(\*\*) Due to multiple sourcing of motors, there may be weight differences (motor in cast iron or aluminium, single-speed or dual-speed, etc.)

(\*\*\*) A is variable depending on the motorization.