



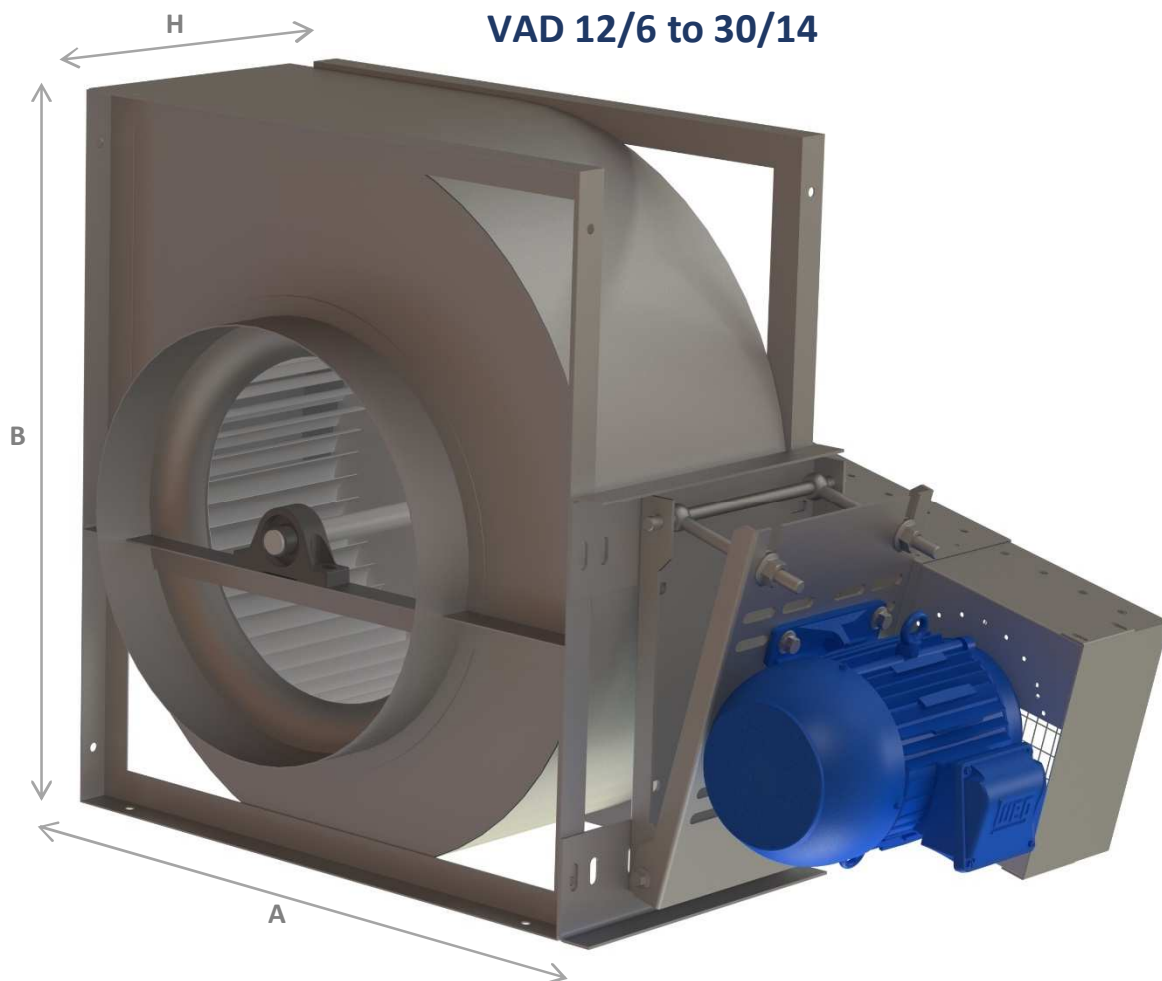
VAD – FORWARD CURVED BLADES

Belt drive

This range of belt-driven fans is fitted with forward inclined blades to provide clean air. The motors are outside the air flow and the entire range is compatible with the reference frames F400-2h, F300-2h and F200-2h. It is available in 7 sizes, from 12/6 to 30/14.

Designed for medium-flow environments with low and medium pressure, this product is particularly suitable for extracting smoke from car parks and tertiary premises. The outlet can be orientated in 4 positions when viewed from the outlet side (see Conventions) and in both rotation directions. This product will be fitted with standard class F one- or two-speed motors.

It is made in pre-galvanized steel sheet and the drive is protected with a housing. The single-inlet impellers are balanced statically and dynamically in accordance with standard ISO 1940 quality G6.3. The bearings are self-aligned, closed and greased for life up to size 18/9. They have greaser fittings and are mounted on a cast-iron stand from size 20/10.

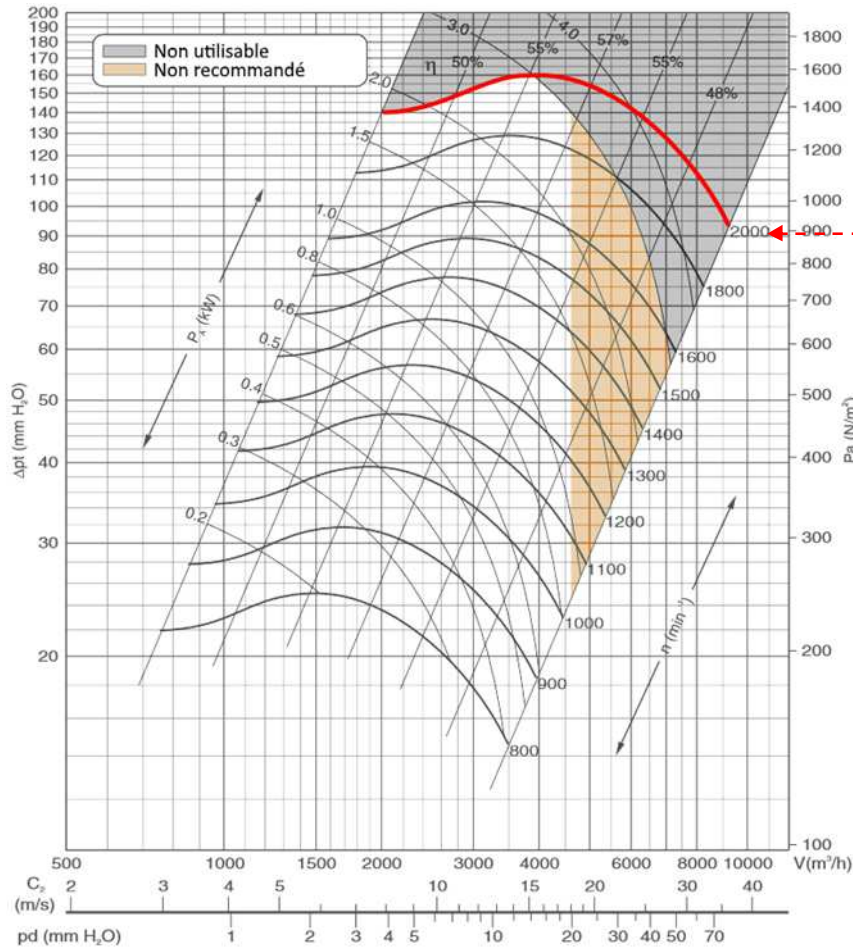


VAD ./.	12/6	15/7	18/9	20/10	22/11	25/13	30/14
A (mm)	505	583	700	840	908	998	1204
B (mm)	534	622	754	935	1019	1142	1374
H (mm)	268	330	368	395	430	487	550
Max. impeller speed (rpm)	2000	1530	1346	1100	970	830	630



VAD 12/6 - 15/7 PERFORMANCES

Common operating range

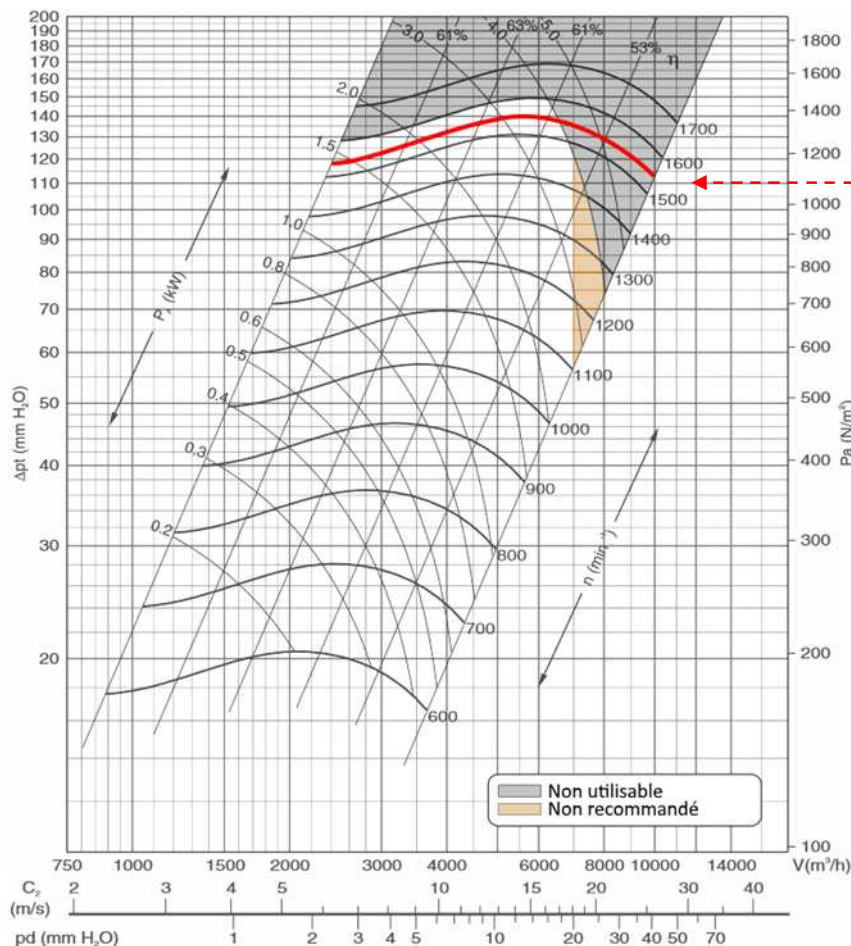


VAD 12/6

Maximum impeller speed:
2000 rpm

Δp_t : Total pressure (Pa or mm H₂O)
 V: Flow rate (m³/h)
 C: Speed at the outlet (m/s)
 Pd: Dynamic pressure (mm H₂O)

Non utilisable = Not used
 Non recommandé = Not recommended



VAD 15/7

Maximum impeller speed:
1530 rpm

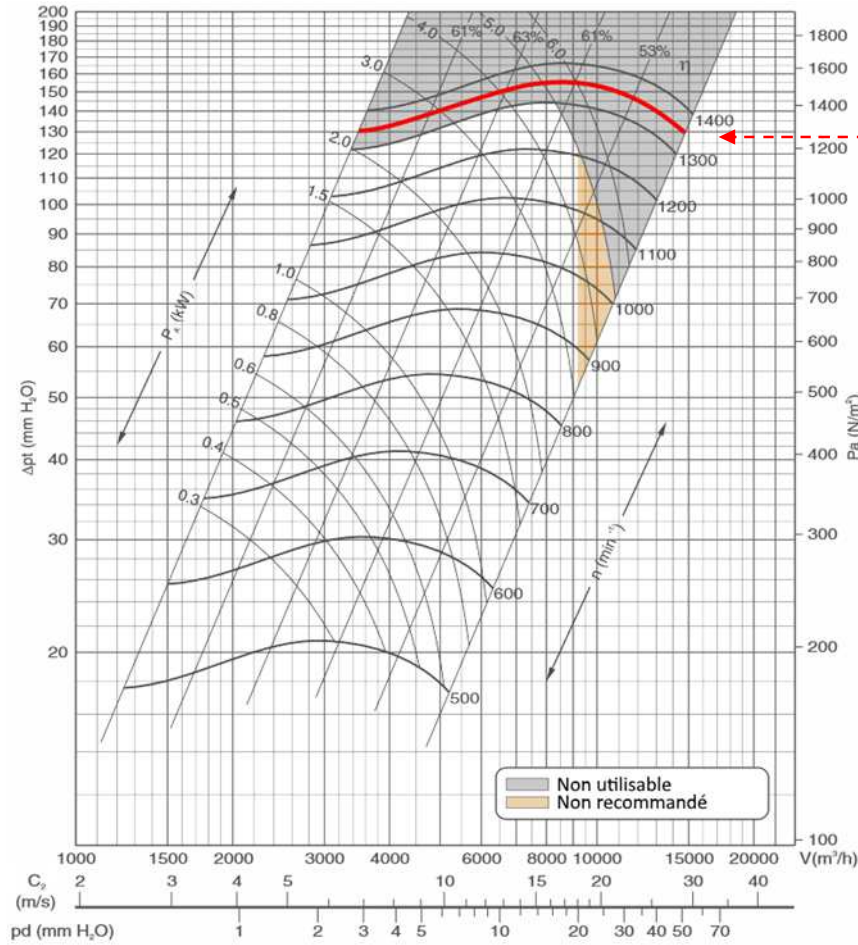
Δp_t : Total pressure (Pa or mm H₂O)
 V: Flow rate (m³/h)
 C: Speed at the outlet (m/s)
 Pd: Dynamic pressure (mm H₂O)

Non utilisable = Not used
 Non recommandé = Not recommended



VAD 18/9 - 20/10 PERFORMANCES

Common operating range

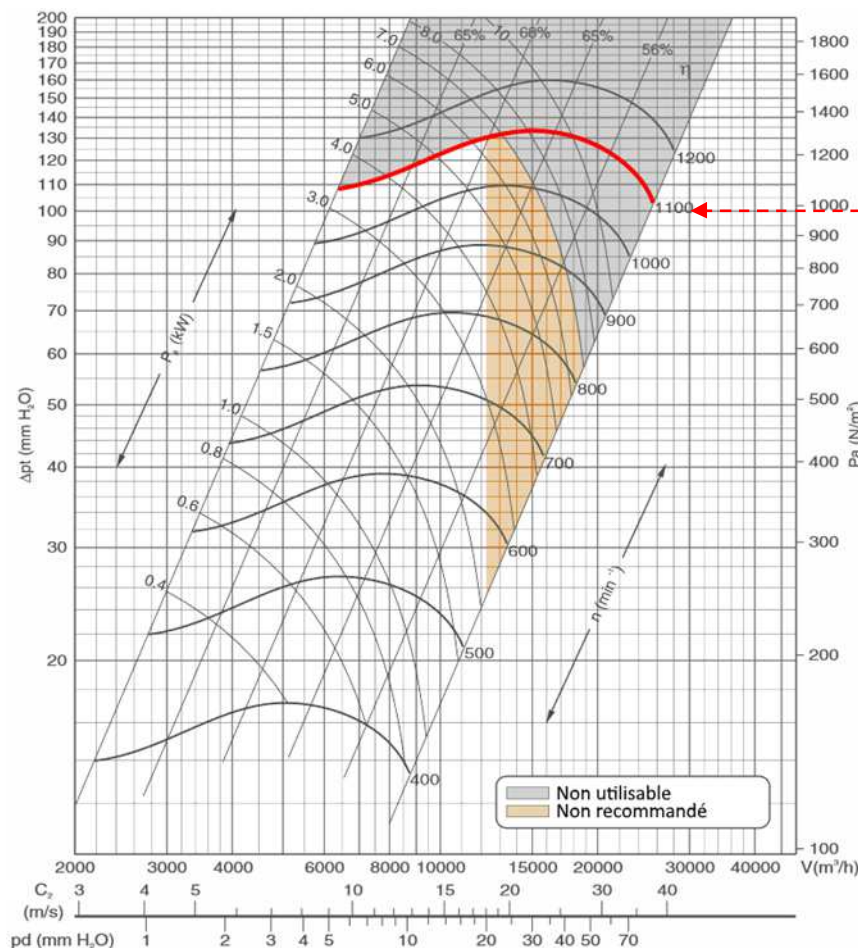


VAD 18/9

Maximum impeller speed:
1346 rpm

Δp_t : Total pressure (Pa or mm H₂O)
 V : Flow rate (m³/h)
 C : Speed at the outlet (m/s)
 P_d : Dynamic pressure (mm H₂O)

Non utilisable = Not used
 Non recommandé = Not recommended



VAD 20/10

Maximum impeller speed:
1100 rpm

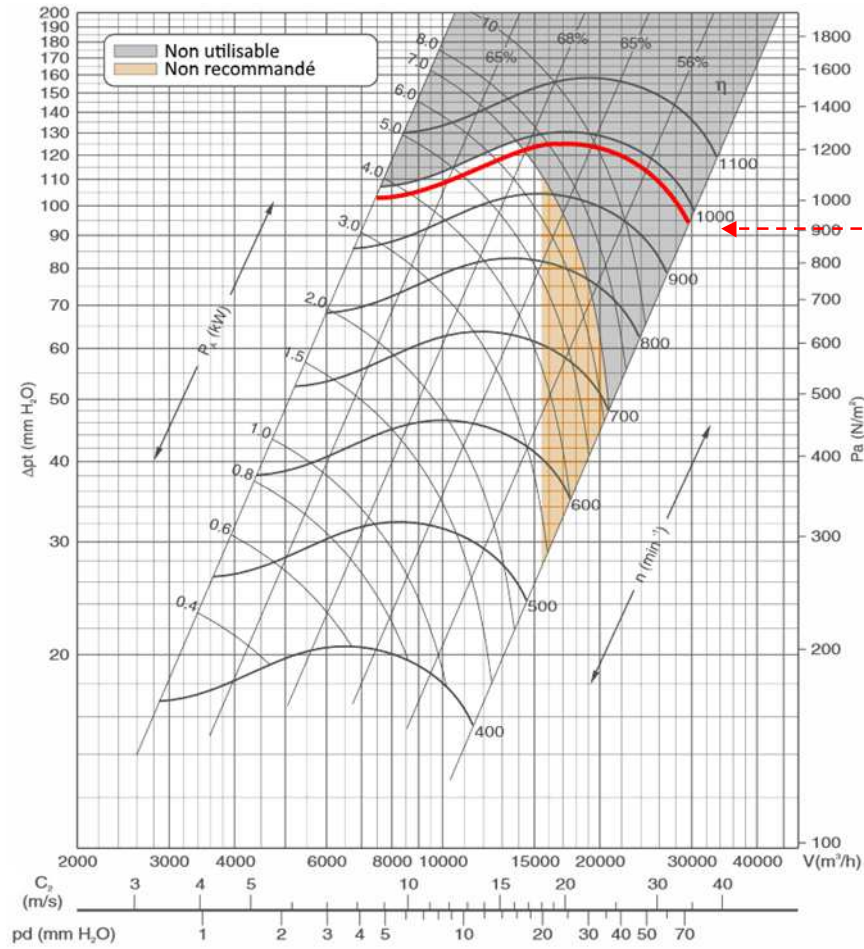
Δp_t : Total pressure (Pa or mm H₂O)
 V : Flow rate (m³/h)
 C : Speed at the outlet (m/s)
 P_d : Dynamic pressure (mm H₂O)

Non utilisable = Not used
 Non recommandé = Not recommended



VAD 22/11 - 25/13 PERFORMANCES

Common operating range

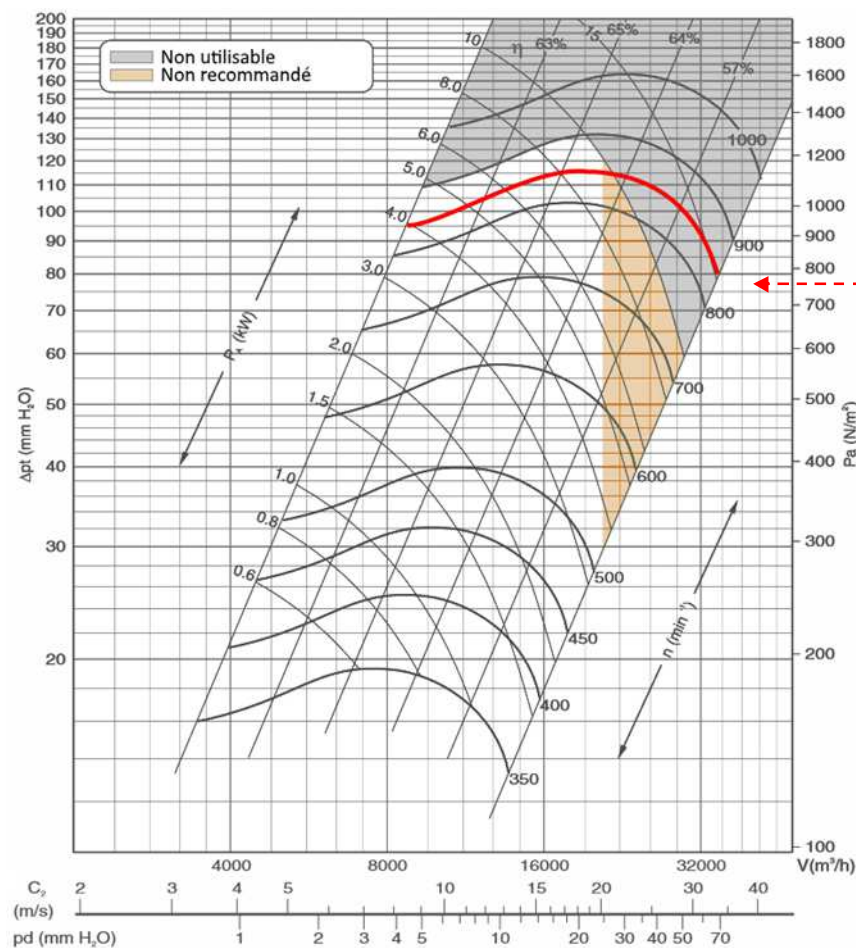


VAD 22/11

Maximum impeller speed:
970 rpm

Δp_t : Total pressure (Pa or mm H₂O)
 V : Flow rate (m³/h)
 C : Speed at the outlet (m/s)
 P_d : Dynamic pressure (mm H₂O)

Non utilisable = Not used
 Non recommandé = Not recommended



VAD 25/13

Maximum impeller speed:
830 rpm

Δp_t : Total pressure (Pa or mm H₂O)
 V : Flow rate (m³/h)
 C : Speed at the outlet (m/s)
 P_d : Dynamic pressure (mm H₂O)

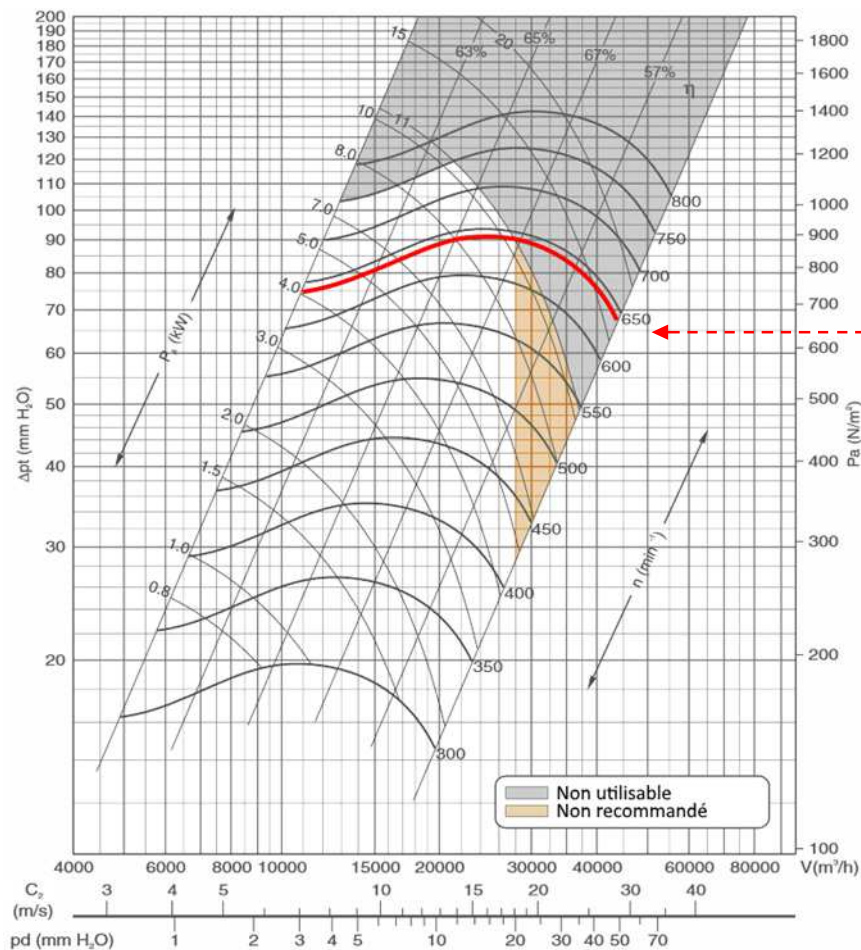
Non utilisable = Not used
 Non recommandé = Not recommended



VAD 30/14 PERFORMANCES

Common operating range

VAD 30/14



Maximum impeller speed:
630 rpm

- Δp_t : Total pressure (Pa or mm H₂O)
- V: Flow rate (m³/h)
- C: Speed at the outlet (m/s)
- Pd: Dynamic pressure (mm H₂O)

Non utilisable = Not used
Non recommandé = Not recommended

