

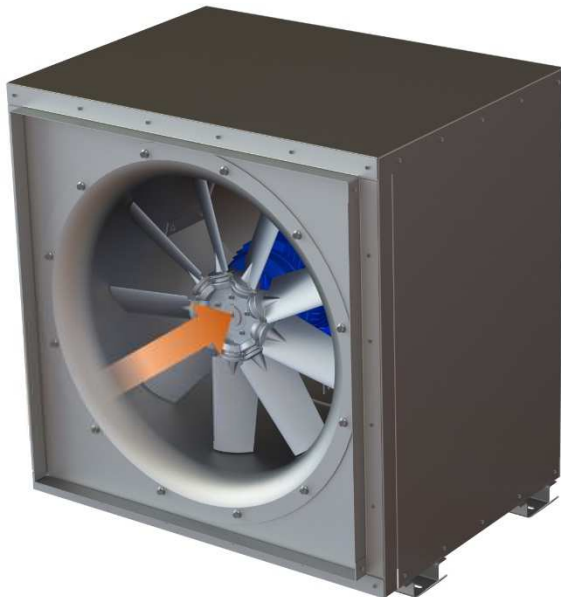


PAF – SOUNDPROOFED PLENUM BOX

Plenum Axial Fan: Axial fan in insulated plenum box

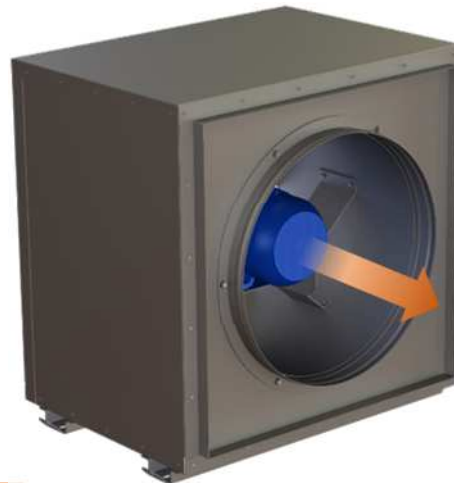
Solutions with soundproof plenum boxes in horizontal flow with or without connection to the inlet and/or outlet are available from diameter 400 to diameter 1250 for motors with a frame size up to 225.

These plenum boxes are made in pre-galvanized steel sheet with or without paint according to your requirements, but they can also be made in stainless steel. Please consult us for larger motorizations and sizes.



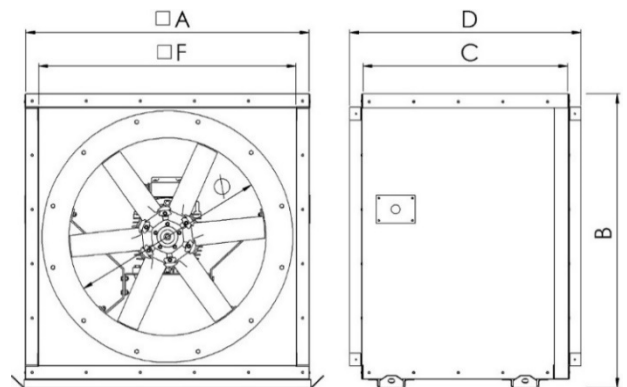
Standard:
Rear panel
OPENED

As standard, the PAF is open at the outlet. For specific needs, an option with closure panel is available on request. Consult us.



Option:
Rear panel
CLOSED

		Dimensions (mm)					Max. weight (kg)	Max. frame size (mm)
		□A	B	C	D	□F		
Type 1	Ø 400						110	90
	Ø 450	920	960	600	695	827	115	90
	Ø 500						150	112
Type 2	Ø 550						165	112
	Ø 630	1025	1065	740	830	928	190	132
	Ø 700						200	132
Type 3	Ø 800	1235	1275	900	995	1142	310	160
	Ø 900						320	160
Type 4	Ø 1000						480	180
	Ø 1120	1675	1715	1000	1095	1583	510	225*
	Ø 1250						540	225*



*Motor power up to 45kW